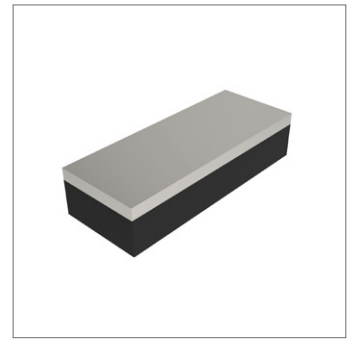
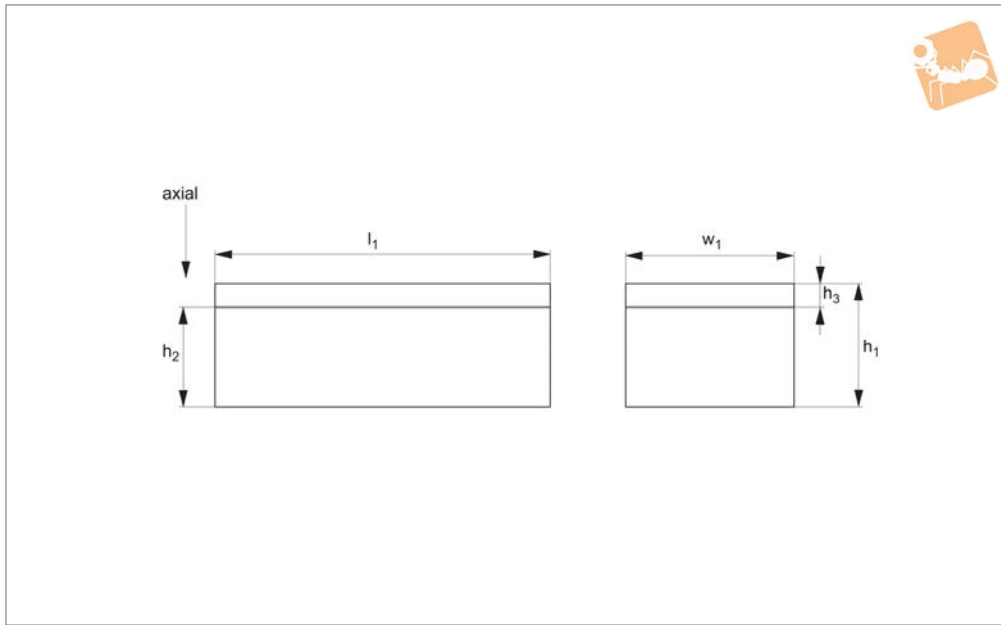




Anti-vibration Impact Plates

metal-rubber

Anti-Vibration Components



P2060

ANTI-VIBRATION COMPONENTS

Material

Rubber on silver zinc plated steel (rubber hardness - 60 Shore A).

be drilled to suit the number of threads, thread sizes and the pitch you require.

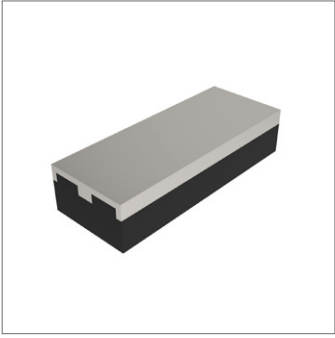
request.

Technical Notes

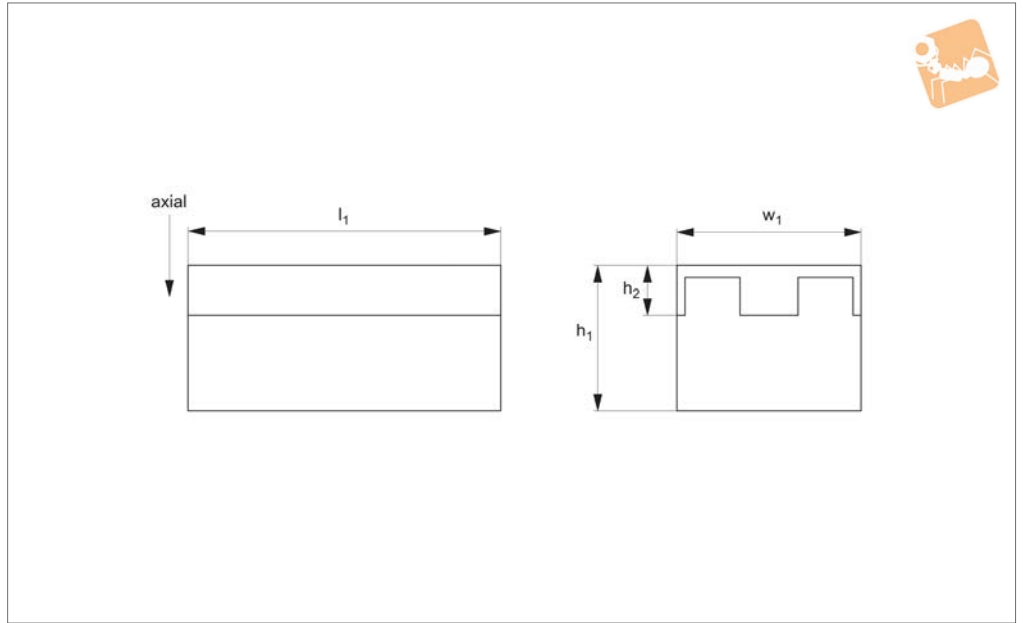
The metal plate is provided blank so it can

Part no. P2060.0500-125 has a ribbed base. Other sizes can be supplied on

Order No.	l_1	w_1	h_1	h_2	h_3	Axial load kgf max.	Compression max.
P2060.1250-035	1250	35	40	30	10	2500	2.0
P2060.0180-070	180	70	40	30	10	1000	2.8
P2060.0245-070	245	70	40	30	10	1300	3.7
P2060.0285-070	285	70	40	30	10	2000	3.6
P2060.0320-070	320	70	40	30	10	2700	3.5
P2060.0250-120	250	120	40	28	12	5000	3.3
P2060.0500-125	500	125	30	15	15	10000	4.0



P2061



Material

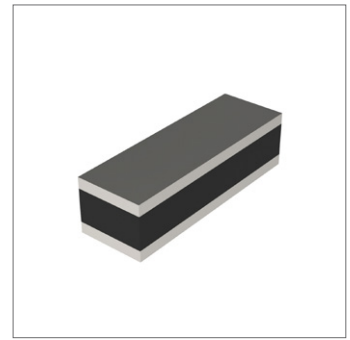
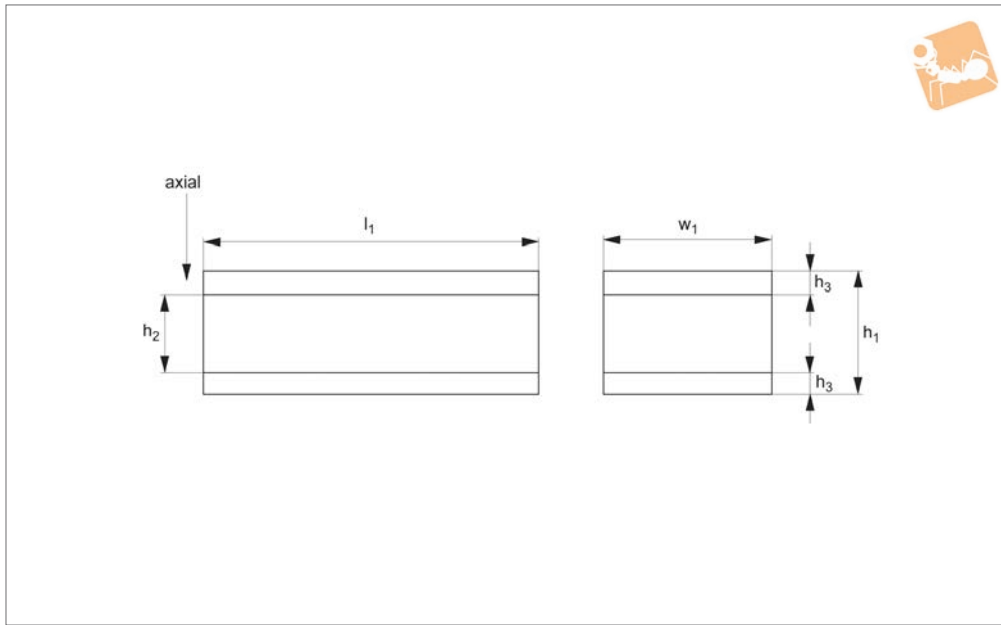
Rubber on silver zinc plated steel (rubber hardness - 60 Shore A).

Technical Notes

The metal plate is provided blank so it can be drilled to suit the number of threads,

thread sizes and the pitch you require. Other sizes can be supplied on request.

Order No.	l_1	w_1	h_1	h_2	Axial load kgf max.
P2061.350-060	350	60	40	13	1000
P2061.450-060	450	60	40	13	1500
P2061.550-060	550	60	40	13	2000



P2062

ANTI-VIBRATION COMPONENTS

Material

Rubber on silver zinc plated steel (rubber hardness - 60Shore A).

can be drilled to suit the number of threads, thread sizes and the pitch you require. Other sizes can be supplied on request. Suitable for very heavy loads.

Technical Notes

The metal plates are provided blank so they

Order No.	l_1	w_1	h_1	h_2	h_3	Axial load kgf max.
P2062.550-040	550	40	40	24	8	2200
P2062.515-050	515	50	40	20	10	2800
P2062.516-050	515	50	50	30	10	2570
P2062.650-060	650	60	50	30	10	3900
P2062.651-060	650	60	60	40	10	3500
P2062.600-070	600	70	50	30	10	4200
P2062.601-070	600	70	55	35	10	4000
P2062.600-080	600	80	80	50	15	4320
P2062.415-100	415	100	60	30	15	4150
P2062.416-100	415	100	80	50	15	3740
P2062.500-150	500	150	80	50	15	6750