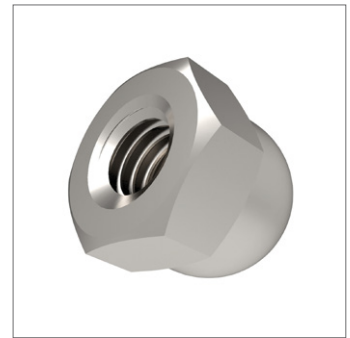
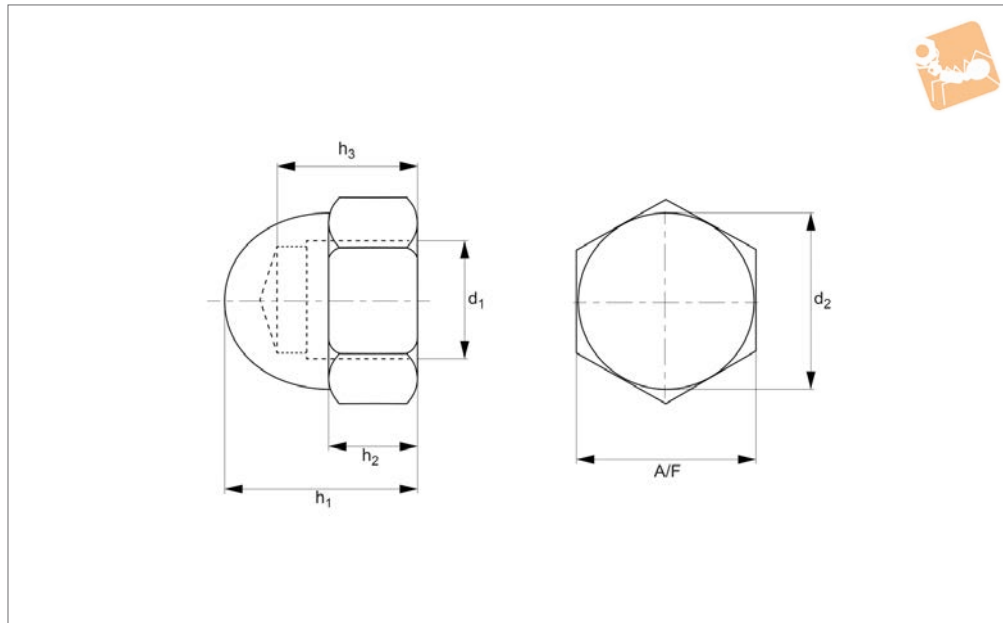




Hexagon Domed Nuts

A2 Stainless



P0318.A2

NUTS

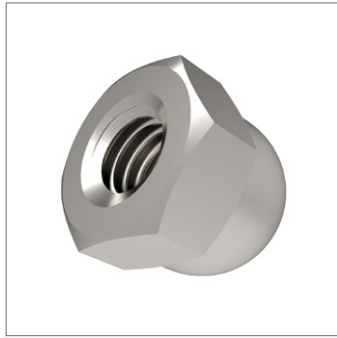
Material

Stainless steel (A2).

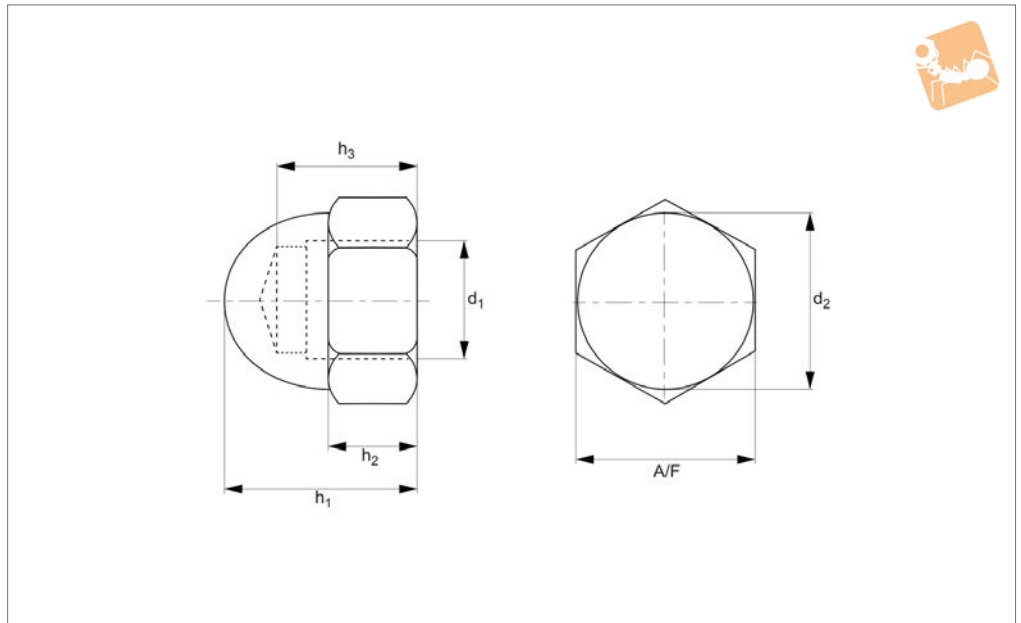
Technical Notes

To DIN 1587.

Order No.	d ₁	h ₁ max.	h ₂ max.	h ₃	d ₂	A/F	Material
P0318.030-A2	M 3	7	2.4	4.5	5.5	5.5	A2 s/s
P0318.040-A2	M 4	8	3.2	5.5	6.5	7.0	A2 s/s
P0318.050-A2	M 5	10	4.0	7.5	7.5	8.0	A2 s/s
P0318.060-A2	M 6	12	5.0	8.0	9.5	10	A2 s/s
P0318.080-A2	M 8	15	6.5	11.0	12.5	13	A2 s/s
P0318.100-A2	M10	18	8.0	13.0	15.0	16	A2 s/s
P0318.120-A2	M12	22	10	16.0	17.0	18	A2 s/s
P0318.140-A2	M14	25	11	18.0	20.0	22	A2 s/s
P0318.160-A2	M16	28	13	21.0	23.0	24	A2 s/s
P0318.180-A2	M18	32	15	25.0	26.0	27	A2 s/s
P0318.200-A2	M20	34	16	26.0	28.0	30	A2 s/s
P0318.220-A2	M22	39	18	29.0	33.0	34	A2 s/s
P0318.240-A2	M24	42	19	31.0	34.0	36	A2 s/s
P0318.270-A2	M27	47	22	35.0	40.0	41	A2 s/s
P0318.300-A2	M30	52	24	38.0	42.0	46	A2 s/s



P0318.A4



Material

Stainless steel (A4).

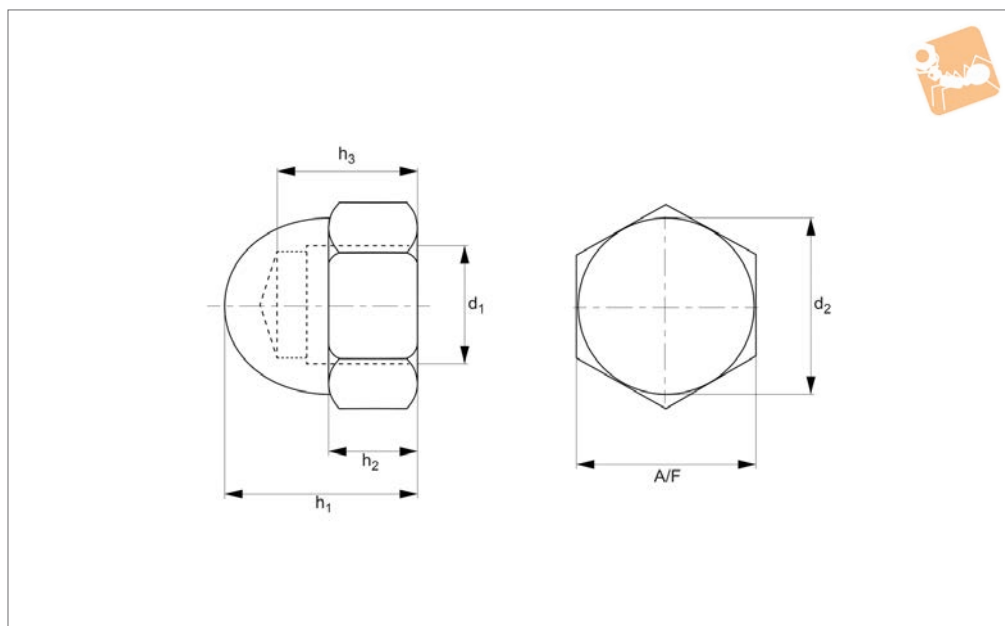
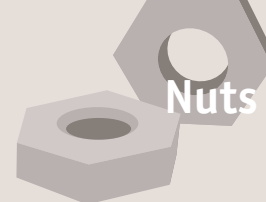
Technical Notes

To DIN 1587.

Order No.	d_1	h_1 max.	h_2 max.	h_3	d_2	A/F	Material
P0318.030-A4	M 3	6	2.4	4.5	5.5	5.5	A4 s/s
P0318.040-A4	M 4	8	3.2	5.5	6.5	7.0	A4 s/s
P0318.050-A4	M 5	10	4.0	7.5	7.5	8.0	A4 s/s
P0318.060-A4	M 6	12	5.0	8.0	9.5	10.0	A4 s/s
P0318.080-A4	M 8	15	6.5	11.0	12.5	13.0	A4 s/s
P0318.100-A4	M10	18	8.0	13.0	16.0	17.0	A4 s/s
P0318.120-A4	M12	22	10	16.0	18.0	19.0	A4 s/s
P0318.140-A4	M14	25	11	18.0	21.0	22.0	A4 s/s
P0318.160-A4	M16	28	13	21.0	23.0	24.0	A4 s/s
P0318.180-A4	M18	32	15	25.0	26.0	27.0	A4 s/s
P0318.200-A4	M20	34	16	26.0	28.0	30.0	A4 s/s
P0318.220-A4	M22	39	18	29.0	33.0	34.0	A4 s/s
P0318.240-A4	M24	42	19	31.0	36.0	36.0	A4 s/s
P0318.270-A4	M27	47	22	35.0	40.0	41.0	A4 s/s
P0318.300-A4	M30	52	24	38.0	42.0	46.0	A4 s/s

Hexagon Domed Nuts

Brass



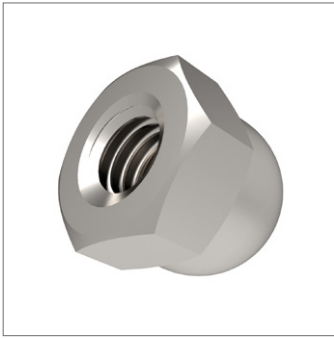
P0318.BR

NUTS

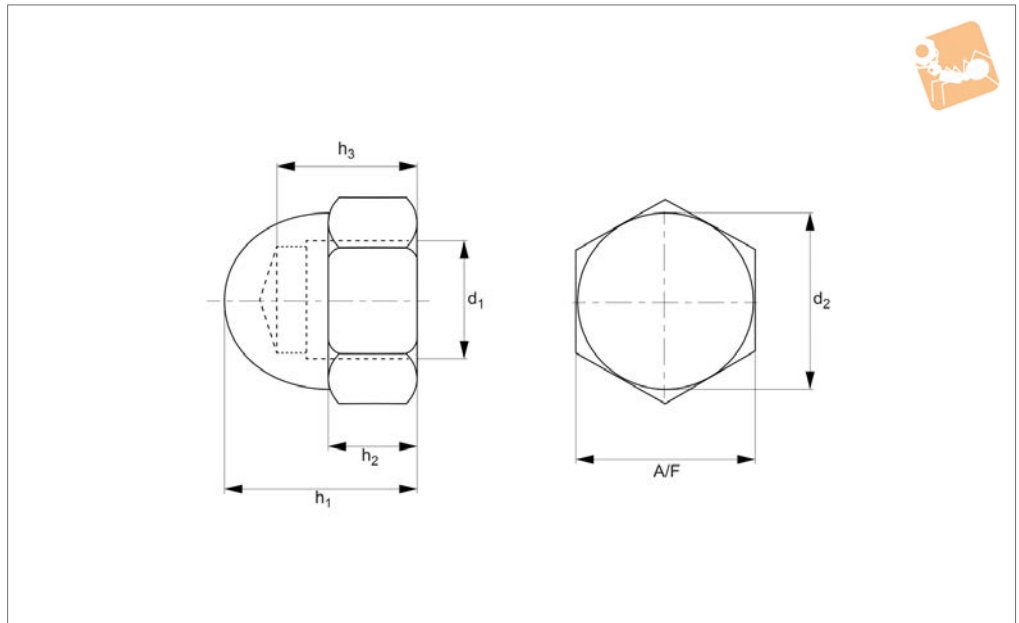
Material
Brass.

Technical Notes
To DIN 1587.

Order No.	d ₁	h ₁ max.	h ₂ max.	h ₃	d ₂	A/F	Material
P0318.030-BR	M 3	6	2.4	4.5	5.5	5.5	Brass
P0318.040-BR	M 4	8	3.2	5.5	6.5	7.0	Brass
P0318.050-BR	M 5	10	4.0	7.5	7.5	8.0	Brass
P0318.060-BR	M 6	12	5.0	8.0	9.5	10.0	Brass
P0318.080-BR	M 8	15	6.5	11.0	12.5	13.0	Brass
P0318.100-BR	M10	18	8.0	13.0	16.0	17.0	Brass
P0318.120-BR	M12	22	10	16.0	18.0	19.0	Brass
P0318.160-BR	M16	28	13	21.0	23.0	24.0	Brass
P0318.200-BR	M20	34	16	26.0	28.0	30.0	Brass



P0318.NL



Material
Nylon.

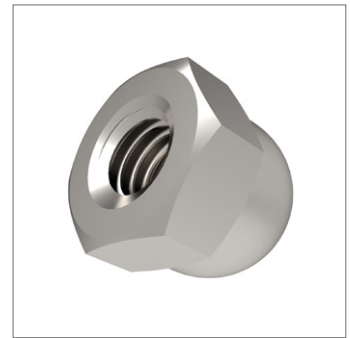
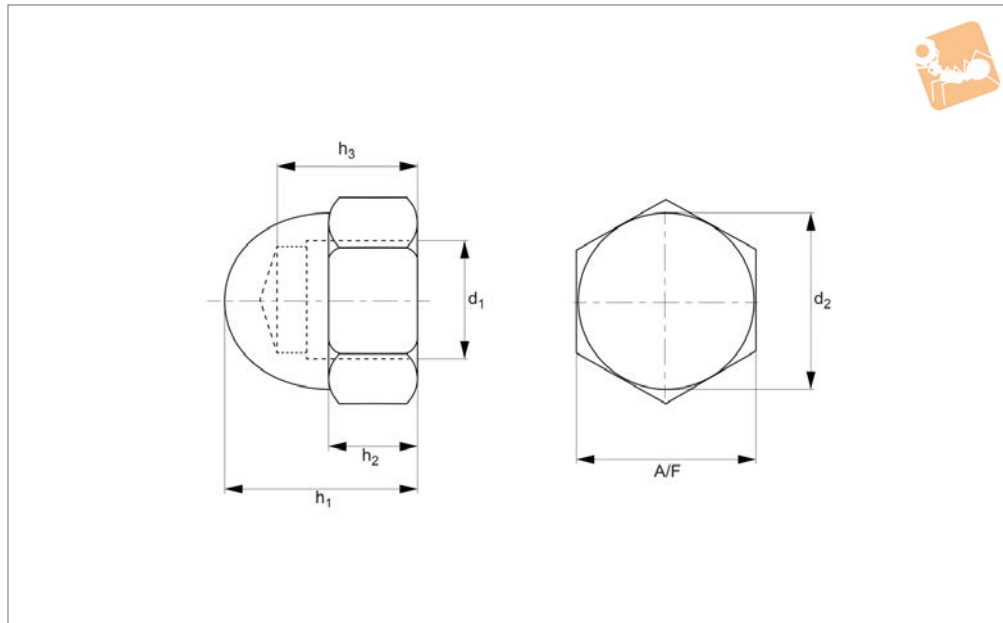
Technical Notes
To DIN 1587.

Order No.	d_1	h_1 max.	h_2 max.	h_3	d_2	A/F	Material
P0318.030-NL	M 3	6	2.4	4.5	5.5	5.5	Nylon
P0318.040-NL	M 4	8	3.2	4.5	6.5	7.0	Nylon
P0318.050-NL	M 5	10	7.5	7.5	7.5	8.0	Nylon
P0318.060-NL	M 6	12	8.0	8.0	9.5	10.0	Nylon
P0318.080-NL	M 8	15	6.5	11.0	12.5	13.0	Nylon
P0318.100-NL	M10	18	8.0	13.0	16.0	17.0	Nylon



Hexagon Domed Nuts

Steel, self-colour



P0318.SC

NUTS

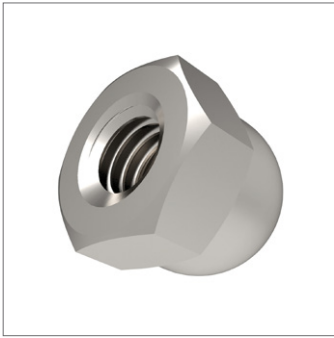
Material

Steel (class 8), self-colour.

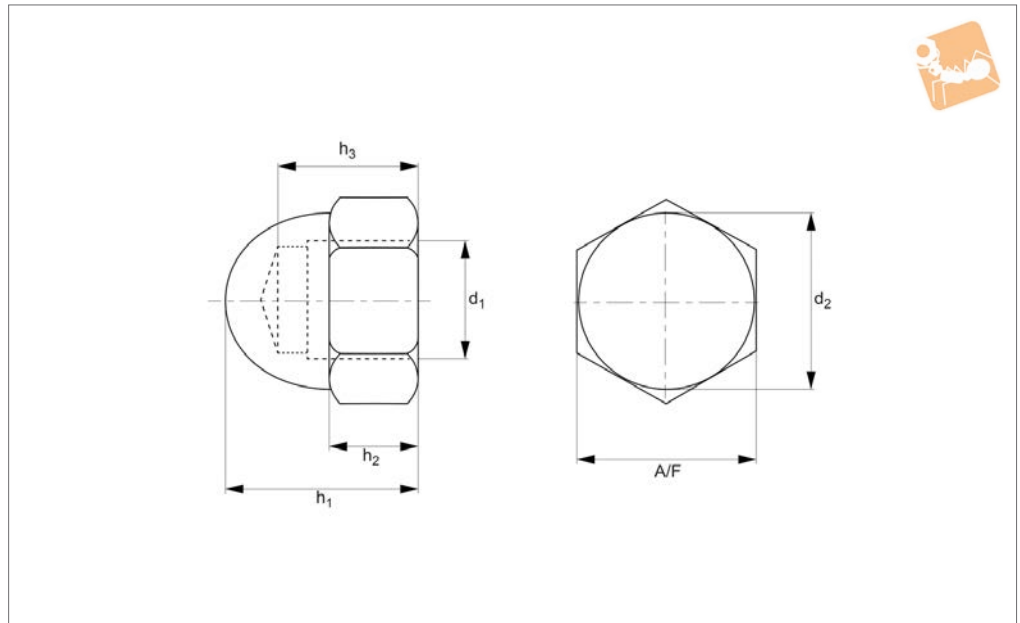
Technical Notes

To DIN 1587.

Order No.	d ₁	h ₁ max.	h ₂ max.	h ₃	d ₂	A/F	Material
P0318.060-SC	M 6	12	5.0	8.0	9.5	10.0	Steel SC
P0318.080-SC	M 8	15	6.5	11.0	12.5	13.0	Steel SC
P0318.100-SC	M10	18	8.0	13.0	16.0	17.0	Steel SC
P0318.120-SC	M12	22	10	16.0	18.0	19.0	Steel SC
P0318.160-SC	M16	28	13	21.0	23.0	24.0	Steel SC
P0318.200-SC	M20	34	16	26.0	30.0	30.0	Steel SC
P0318.240-SC	M24	42	19	31.0	34.0	36.0	Steel SC
P0318.270-SC	M27	47	22	35.0	40.0	41.0	Steel SC
P0318.300-SC	M30	52	24	38.0	42.0	46.0	Steel SC



P0318.ZP



Material

Steel (class 8), zinc-plated.

Technical Notes

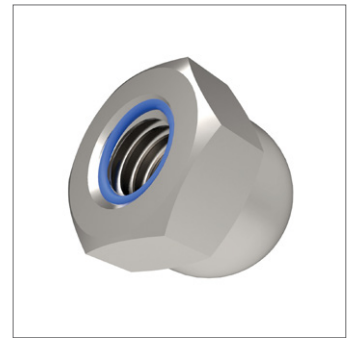
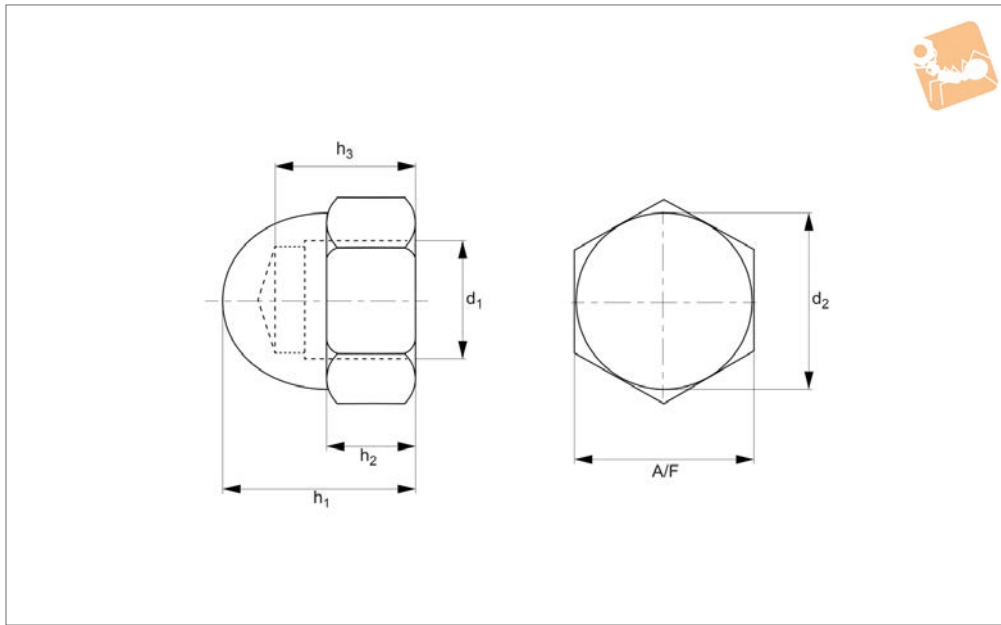
To DIN 1587.

Order No.	d_1	h_1 max.	h_2 max.	h_3	d_2	A/F	Material
P0318.040-ZP	M 4	8	3.2	5.5	7.0	8.0	Steel ZP
P0318.050-ZP	M 5	10	4.0	7.5	8.0	10.0	Steel ZP
P0318.060-ZP	M 6	12	5.0	8.0	10.0	12.0	Steel ZP
P0318.080-ZP	M 8	15	6.5	11.0	13.0	15.0	Steel ZP
P0318.100-ZP	M10	18	8.0	13.0	17.0	20.0	Steel ZP
P0318.120-ZP	M12	22	10	16.0	19.0	25.0	Steel ZP
P0318.160-ZP	M16	28	13	21.0	24.0	30.0	Steel ZP
P0318.200-ZP	M20	34	16	26.0	30.0	35.0	Steel ZP
P0318.240-ZP	M24	42	19	31.0	36.0	40.0	Steel ZP
P0318.270-ZP	M27	47	22	35.0	41.0	50.0	Steel ZP



Nylon Insert Domed Nuts

Nylon insert - A2 stainless



P0319.A2

NUTS

Material

Stainless steel (A2, AISI 303).

Technical Notes

To DIN 986.

Order No.	d ₁	h ₁ max.	h ₂ max.	A/F	Material
P0319.040-A2	M 4	9.6	2.90	7	A2 s/s
P0319.050-A2	M 5	10.5	4.40	8	A2 s/s
P0319.060-A2	M 6	12.0	4.90	10	A2 s/s
P0319.080-A2	M 8	14.0	6.44	13	A2 s/s
P0319.100-A2	M10	18.1	8.04	17	A2 s/s
P0319.120-A2	M12	22.5	10.37	19	A2 s/s
P0319.160-A2	M16	27.5	14.10	24	A2 s/s

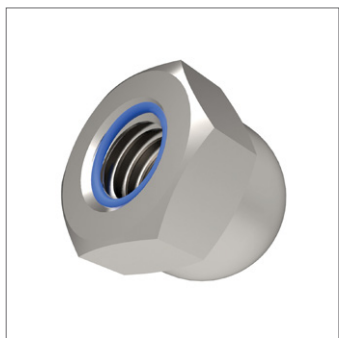


Nylon Insert Domed Nuts

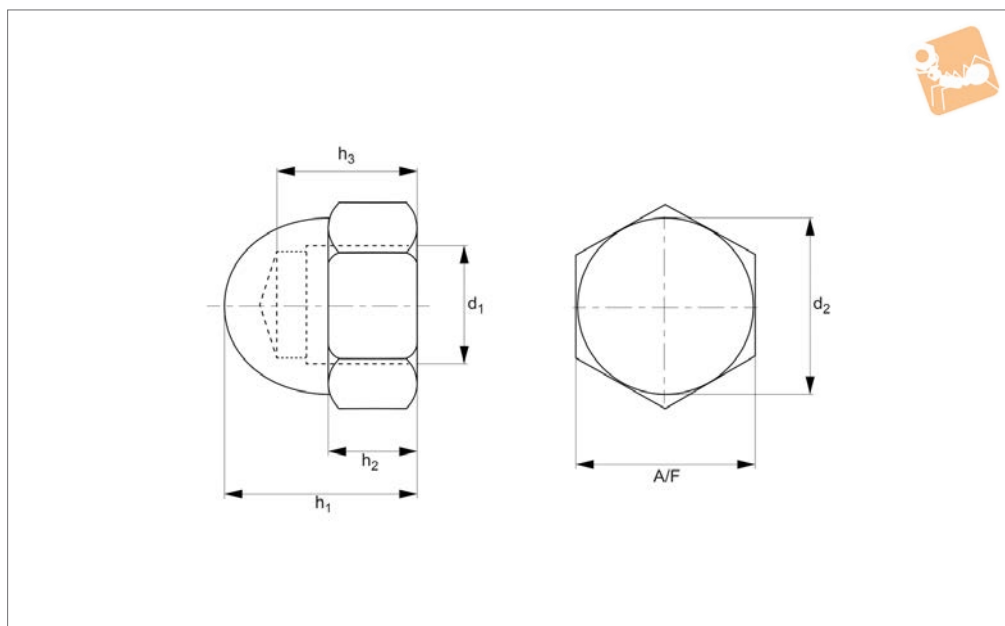
Nylon insert - steel, zinc-plated



NUTS



P0319.ZP



Material

Steel (class 6 or over), zinc-plated.

Technical Notes

To DIN 986.

Order No.	d_1	h_1 max.	h_2 max.	A/F	Material
P0319.040-ZP	M 4	9.6	2.90	7	Steel ZP
P0319.050-ZP	M 5	10.5	4.40	8	Steel ZP
P0319.060-ZP	M 6	12.0	4.90	10	Steel ZP
P0319.080-ZP	M 8	14.0	6.44	13	Steel ZP
P0319.100-ZP	M10	18.1	8.04	17	Steel ZP
P0319.120-ZP	M12	22.5	10.37	19	Steel ZP
P0319.160-ZP	M16	27.5	14.10	24	Steel ZP