

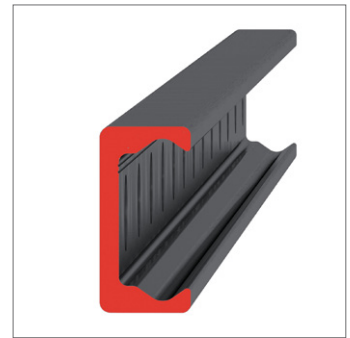
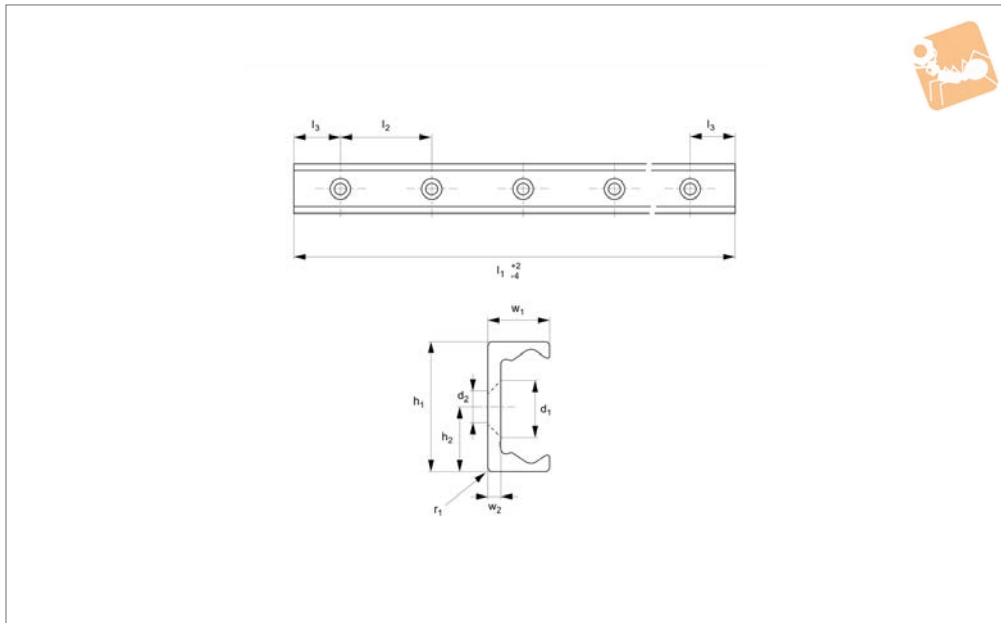


Medium Duty T Rail

countersunk holes



Long Linear Rails



L1928.28T-V

LONG LINEAR RAILS

Material

Carbon steel. Raceways induction hardened and ground.
Electrolytic zinc-plated (excluding raceways).

Technical Notes

The T rail is a master rail and is usually

used with a U slave rail (allows for misalignment).
This is the T-V countersunk rail which is usually used with a corresponding U-V rail. For fixing use countersunk DIN 7991 screws.
Weight: 1,0 Kg/m.

Tips

Standard carriages are the L1928.N versions (die cast aluminium alloy with wipers). Alternatively the L1928.C type is also available (without wipers).

Order No.	h_1	h_2	l_1	l_2	l_3	r_1	w_1	w_2	d for screws
L1928.28T-0240-V	28	14	240	80	40	1	12.3	3	M5
L1928.28T-0320-V	28	14	320	80	40	1	12.3	3	M5
L1928.28T-0400-V	28	14	400	80	40	1	12.3	3	M5
L1928.28T-0480-V	28	14	480	80	40	1	12.3	3	M5
L1928.28T-0560-V	28	14	560	80	40	1	12.3	3	M5
L1928.28T-0640-V	28	14	640	80	40	1	12.3	3	M5
L1928.28T-0720-V	28	14	720	80	40	1	12.3	3	M5
L1928.28T-0800-V	28	14	800	80	40	1	12.3	3	M5
L1928.28T-0880-V	28	14	880	80	40	1	12.3	3	M5
L1928.28T-0960-V	28	14	960	80	40	1	12.3	3	M5
L1928.28T-1040-V	28	14	1040	80	40	1	12.3	3	M5
L1928.28T-1120-V	28	14	1120	80	40	1	12.3	3	M5
L1928.28T-1200-V	28	14	1200	80	40	1	12.3	3	M5
L1928.28T-1280-V	28	14	1280	80	40	1	12.3	3	M5
L1928.28T-1360-V	28	14	1360	80	40	1	12.3	3	M5
L1928.28T-1440-V	28	14	1440	80	40	1	12.3	3	M5
L1928.28T-1520-V	28	14	1520	80	40	1	12.3	3	M5
L1928.28T-1600-V	28	14	1600	80	40	1	12.3	3	M5
L1928.28T-1680-V	28	14	1680	80	40	1	12.3	3	M5
L1928.28T-1760-V	28	14	1760	80	40	1	12.3	3	M5
L1928.28T-1840-V	28	14	1840	80	40	1	12.3	3	M5
L1928.28T-1920-V	28	14	1920	80	40	1	12.3	3	M5
L1928.28T-2000-V	28	14	2000	80	40	1	12.3	3	M5
L1928.28T-2080-V	28	14	2080	80	40	1	12.3	3	M5
L1928.28T-2160-V	28	14	2160	80	40	1	12.3	3	M5
L1928.28T-2240-V	28	14	2240	80	40	1	12.3	3	M5
L1928.28T-2320-V	28	14	2320	80	40	1	12.3	3	M5
L1928.28T-2400-V	28	14	2400	80	40	1	12.3	3	M5
L1928.28T-2480-V	28	14	2480	80	40	1	12.3	3	M5
L1928.28T-2560-V	28	14	2560	80	40	1	12.3	3	M5
L1928.28T-2640-V	28	14	2640	80	40	1	12.3	3	M5



LONG LINEAR RAILS

Order No.	h ₁	h ₂	l ₁	l ₂	l ₃	r ₁	w ₁	w ₂	d for screws
L1928.28T-2720-V	28	14	2720	80	40	1	12.3	3	M5
L1928.28T-2800-V	28	14	2800	80	40	1	12.3	3	M5
L1928.28T-2880-V	28	14	2880	80	40	1	12.3	3	M5
L1928.28T-2960-V	28	14	2960	80	40	1	12.3	3	M5
L1928.28T-3040-V	28	14	3040	80	40	1	12.3	3	M5
L1928.28T-3120-V	28	14	3120	80	40	1	12.3	3	M5
L1928.28T-3200-V	28	14	3200	80	40	1	12.3	3	M5
L1928.28T-3280-V	28	14	3280	80	40	1	12.3	3	M5
L1928.28T-3360-V	28	14	3360	80	40	1	12.3	3	M5
L1928.28T-3440-V	28	14	3440	80	40	1	12.3	3	M5
L1928.28T-3520-V	28	14	3520	80	40	1	12.3	3	M5
L1928.28T-3600-V	28	14	3600	80	40	1	12.3	3	M5
L1928.28T-3680-V	28	14	3680	80	40	1	12.3	3	M5
L1928.28T-3760-V	28	14	3760	80	40	1	12.3	3	M5
L1928.28T-3840-V	28	14	3840	80	40	1	12.3	3	M5
L1928.28T-3920-V	28	14	3920	80	40	1	12.3	3	M5
L1928.28T-4000-V	28	14	4000	80	40	1	12.3	3	M5
L1928.28T-4080-V	28	14	4080	80	40	1	12.3	3	M5