

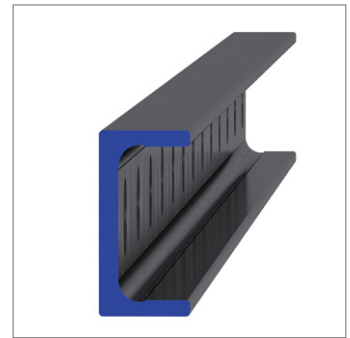
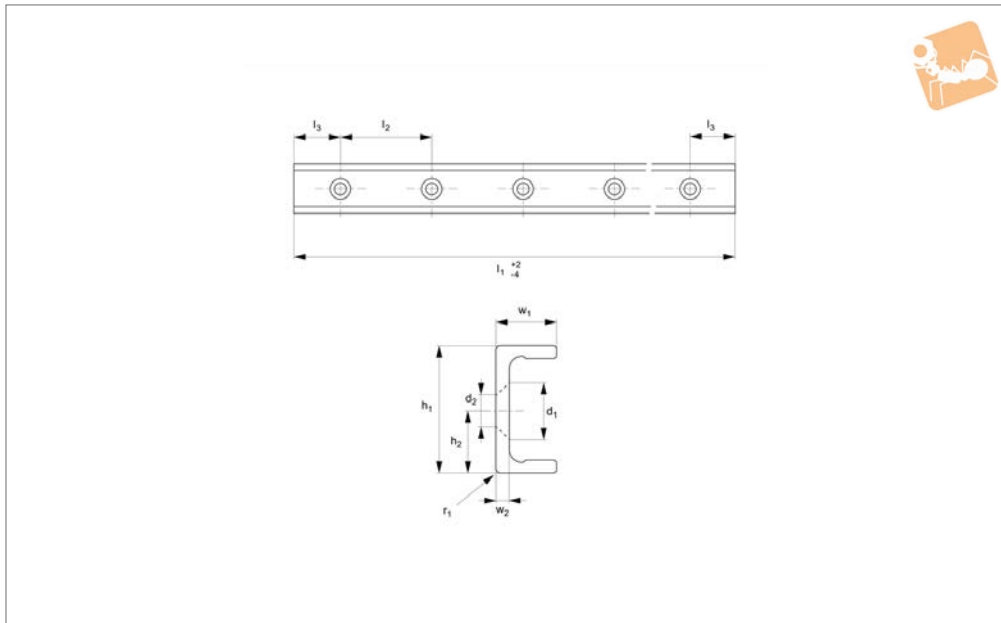


# Medium Duty U Rail

countersunk holes



## Long Linear Rails



### L1935.35U-V

LONG LINEAR RAILS

#### Material

Carbon steel. Raceways induction hardened and ground.  
Electrolytic zinc-plated (excluding raceways).

#### Technical Notes

The U rail is a slave rail and is usually used

with a T master rail.

This is the U-V countersunk rail type which is usually used with a corresponding T-V rail.

For fixing use countersunk DIN 7991 screws.

Weight: 1,7 Kg/m.

#### Tips

Standard carriages are the L1935.CL series.

Order No.	d <sub>2</sub> for screws	h <sub>1</sub>	h <sub>2</sub>	l <sub>1</sub>	l <sub>2</sub>	l <sub>3</sub>	r <sub>1</sub>	w <sub>1</sub>	w <sub>2</sub>
L1935.35U-0240-V	M6	35	17.5	240	80	40	1	16	3.5
L1935.35U-0320-V	M6	35	17.5	320	80	40	1	16	3.5
L1935.35U-0400-V	M6	35	17.5	400	80	40	1	16	3.5
L1935.35U-0480-V	M6	35	17.5	480	80	40	1	16	3.5
L1935.35U-0560-V	M6	35	17.5	560	80	40	1	16	3.5
L1935.35U-0640-V	M6	35	17.5	640	80	40	1	16	3.5
L1935.35U-0720-V	M6	35	17.5	720	80	40	1	16	3.5
L1935.35U-0800-V	M6	35	17.5	800	80	40	1	16	3.5
L1935.35U-0880-V	M6	35	17.5	880	80	40	1	16	3.5
L1935.35U-0960-V	M6	35	17.5	960	80	40	1	16	3.5
L1935.35U-1040-V	M6	35	17.5	1040	80	40	1	16	3.5
L1935.35U-1120-V	M6	35	17.5	1120	80	40	1	16	3.5
L1935.35U-1200-V	M6	35	17.5	1200	80	40	1	16	3.5
L1935.35U-1280-V	M6	35	17.5	1280	80	40	1	16	3.5
L1935.35U-1360-V	M6	35	17.5	1360	80	40	1	16	3.5
L1935.35U-1440-V	M6	35	17.5	1440	80	40	1	16	3.5
L1935.35U-1520-V	M6	35	17.5	1520	80	40	1	16	3.5
L1935.35U-1600-V	M6	35	17.5	1600	80	40	1	16	3.5
L1935.35U-1680-V	M6	35	17.5	1680	80	40	1	16	3.5
L1935.35U-1760-V	M6	35	17.5	1760	80	40	1	16	3.5
L1935.35U-1840-V	M6	35	17.5	1840	80	40	1	16	3.5
L1935.35U-1920-V	M6	35	17.5	1920	80	40	1	16	3.5
L1935.35U-2000-V	M6	35	17.5	2000	80	40	1	16	3.5
L1935.35U-2080-V	M6	35	17.5	2080	80	40	1	16	3.5
L1935.35U-2160-V	M6	35	17.5	2160	80	40	1	16	3.5
L1935.35U-2240-V	M6	35	17.5	2240	80	40	1	16	3.5
L1935.35U-2320-V	M6	35	17.5	2320	80	40	1	16	3.5
L1935.35U-2400-V	M6	35	17.5	2400	80	40	1	16	3.5
L1935.35U-2480-V	M6	35	17.5	2480	80	40	1	16	3.5
L1935.35U-2560-V	M6	35	17.5	2560	80	40	1	16	3.5
L1935.35U-2640-V	M6	35	17.5	2640	80	40	1	16	3.5



Order No.	d <sub>2</sub> for screws	h <sub>1</sub>	h <sub>2</sub>	l <sub>1</sub>	l <sub>2</sub>	l <sub>3</sub>	r <sub>1</sub>	w <sub>1</sub>	w <sub>2</sub>
L1935.35U-2720-V	M6	35	17.5	2720	80	40	1	16	3.5
L1935.35U-2800-V	M6	35	17.5	2800	80	40	1	16	3.5
L1935.35U-2880-V	M6	35	17.5	2880	80	40	1	16	3.5
L1935.35U-2960-V	M6	35	17.5	2960	80	40	1	16	3.5
L1935.35U-3040-V	M6	35	17.5	3040	80	40	1	16	3.5
L1935.35U-3120-V	M6	35	17.5	3120	80	40	1	16	3.5
L1935.35U-3200-V	M6	35	17.5	3200	80	40	1	16	3.5
L1935.35U-3280-V	M6	35	17.5	3280	80	40	1	16	3.5
L1935.35U-3360-V	M6	35	17.5	3360	80	40	1	16	3.5
L1935.35U-3440-V	M6	35	17.5	3440	80	40	1	16	3.5
L1935.35U-3520-V	M6	35	17.5	3520	80	40	1	16	3.5
L1935.35U-3600-V	M6	35	17.5	3600	80	40	1	16	3.5
L1935.35U-3680-V	M6	35	17.5	3680	80	40	1	16	3.5
L1935.35U-3760-V	M6	35	17.5	3760	80	40	1	16	3.5
L1935.35U-3840-V	M6	35	17.5	3840	80	40	1	16	3.5
L1935.35U-3920-V	M6	35	17.5	3920	80	40	1	16	3.5
L1935.35U-4000-V	M6	35	17.5	4000	80	40	1	16	3.5
L1935.35U-4080-V	M6	35	17.5	4080	80	40	1	16	3.5