

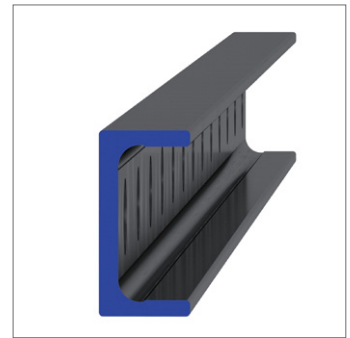
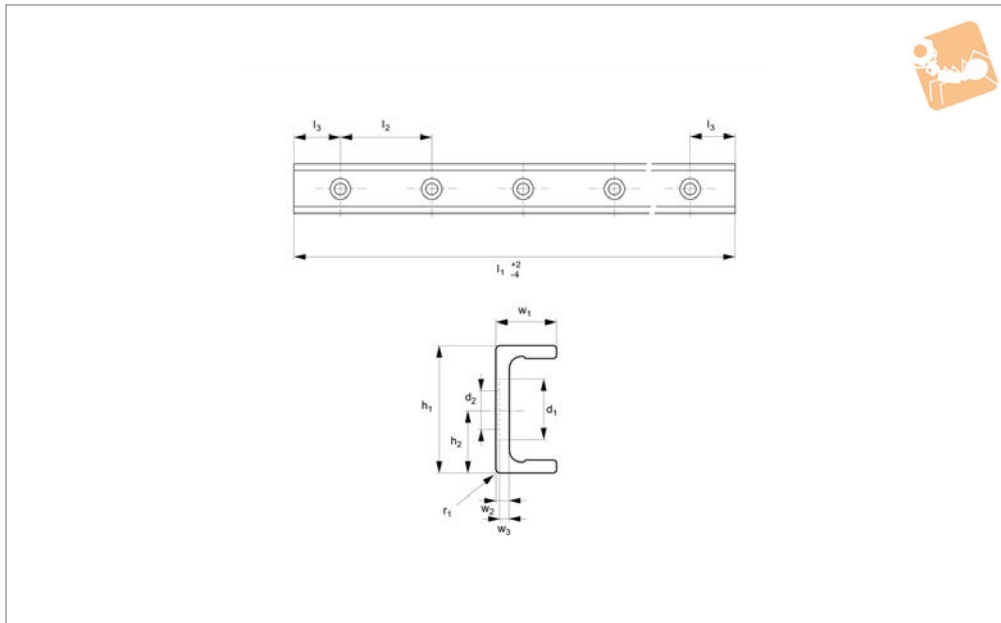


# Medium Duty U Rail

counterbored holes



Long Linear  
Rails



**L1935.ULC35**

LONG LINEAR RAILS

### Material

Carbon steel. Raceways induction hardened and ground.  
Electrolytic zinc-plated (excluding raceways).

### Technical Notes

The U rail is a slave rail and is usually used with a T master rail.  
This is the ULC counterbored rail type (most popular), which is usually used with

a corresponding TLC rail.  
Special low profile Torx head screws provided free of charge.  
Weight: 1,7 Kg/m.

Order No.	d <sub>1</sub>	d <sub>2</sub>	h <sub>1</sub>	h <sub>2</sub>	l <sub>1</sub>	l <sub>2</sub>	l <sub>3</sub>	r <sub>1</sub>	w <sub>1</sub>	w <sub>2</sub>	w <sub>3</sub>
L1935.ULC35-0320	14.5	M6	35	17.5	320	80	40	2	16	3.5	2.7
L1935.ULC35-0400	14.5	M6	35	17.5	400	80	40	2	16	3.5	2.7
L1935.ULC35-0480	14.5	M6	35	17.5	480	80	40	2	16	3.5	2.7
L1935.ULC35-0560	14.5	M6	35	17.5	560	80	40	2	16	3.5	2.7
L1935.ULC35-0640	14.5	M6	35	17.5	640	80	40	2	16	3.5	2.7
L1935.ULC35-0720	14.5	M6	35	17.5	720	80	40	2	16	3.5	2.7
L1935.ULC35-0800	14.5	M6	35	17.5	800	80	40	2	16	3.5	2.7
L1935.ULC35-0880	14.5	M6	35	17.5	880	80	40	2	16	3.5	2.7
L1935.ULC35-0960	14.5	M6	35	17.5	960	80	40	2	16	3.5	2.7
L1935.ULC35-1040	14.5	M6	35	17.5	1040	80	40	2	16	3.5	2.7
L1935.ULC35-1120	14.5	M6	35	17.5	1120	80	40	2	16	3.5	2.7
L1935.ULC35-1200	14.5	M6	35	17.5	1200	80	40	2	16	3.5	2.7
L1935.ULC35-1280	14.5	M6	35	17.5	1280	80	40	2	16	3.5	2.7
L1935.ULC35-1360	14.5	M6	35	17.5	1360	80	40	2	16	3.5	2.7
L1935.ULC35-1440	14.5	M6	35	17.5	1440	80	40	2	16	3.5	2.7
L1935.ULC35-1520	14.5	M6	35	17.5	1520	80	40	2	16	3.5	2.7
L1935.ULC35-1600	14.5	M6	35	17.5	1600	80	40	2	16	3.5	2.7
L1935.ULC35-1680	14.5	M6	35	17.5	1680	80	40	2	16	3.5	2.7
L1935.ULC35-1760	14.5	M6	35	17.5	1760	80	40	2	16	3.5	2.7
L1935.ULC35-1840	14.5	M6	35	17.5	1840	80	40	2	16	3.5	2.7
L1935.ULC35-1920	14.5	M6	35	17.5	1920	80	40	2	16	3.5	2.7
L1935.ULC35-2000	14.5	M6	35	17.5	2000	80	40	2	16	3.5	2.7
L1935.ULC35-2080	14.5	M6	35	17.5	2080	80	40	2	16	3.5	2.7
L1935.ULC35-2160	14.5	M6	35	17.5	2160	80	40	2	16	3.5	2.7
L1935.ULC35-2240	14.5	M6	35	17.5	2240	80	40	2	16	3.5	2.7
L1935.ULC35-2320	14.5	M6	35	17.5	2320	80	40	2	16	3.5	2.7
L1935.ULC35-2400	14.5	M6	35	17.5	2400	80	40	2	16	3.5	2.7
L1935.ULC35-2480	14.5	M6	35	17.5	2480	80	40	2	16	3.5	2.7
L1935.ULC35-2560	14.5	M6	35	17.5	2560	80	40	2	16	3.5	2.7
L1935.ULC35-2640	14.5	M6	35	17.5	2640	80	40	2	16	3.5	2.7
L1935.ULC35-2720	14.5	M6	35	17.5	2720	80	40	2	16	3.5	2.7
L1935.ULC35-2800	14.5	M6	35	17.5	2800	80	40	2	16	3.5	2.7
L1935.ULC35-2880	14.5	M6	35	17.5	2880	80	40	2	16	3.5	2.7



Order No.	d <sub>1</sub>	d <sub>2</sub>	h <sub>1</sub>	h <sub>2</sub>	l <sub>1</sub>	l <sub>2</sub>	l <sub>3</sub>	r <sub>1</sub>	w <sub>1</sub>	w <sub>2</sub>	w <sub>3</sub>
<b>L1935.ULC35-2960</b>	14.5	M6	35	17.5	2960	80	40	2	16	3.5	2.7
<b>L1935.ULC35-3040</b>	14.5	M6	35	17.5	3040	80	40	2	16	3.5	2.7
<b>L1935.ULC35-3120</b>	14.5	M6	35	17.5	3120	80	40	2	16	3.5	2.7
<b>L1935.ULC35-3200</b>	14.5	M6	35	17.5	3200	80	40	2	16	3.5	2.7
<b>L1935.ULC35-3280</b>	14.5	M6	35	17.5	3280	80	40	2	16	3.5	2.7
<b>L1935.ULC35-3360</b>	14.5	M6	35	17.5	3360	80	40	2	16	3.5	2.7
<b>L1935.ULC35-3440</b>	14.5	M6	35	17.5	3440	80	40	2	16	3.5	2.7
<b>L1935.ULC35-3520</b>	14.5	M6	35	17.5	3520	80	40	2	16	3.5	2.7
<b>L1935.ULC35-3600</b>	14.5	M6	35	17.5	3600	80	40	2	16	3.5	2.7