

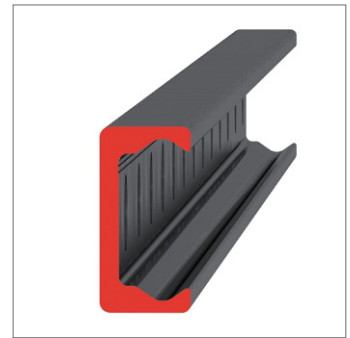
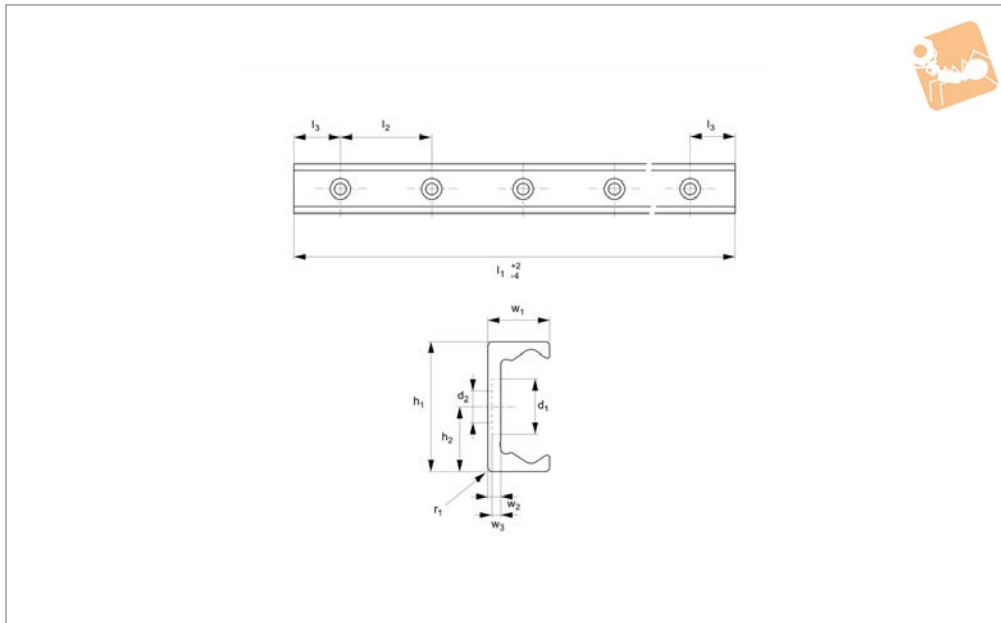


Heavy Duty T Rail

counterbored holes



Long Linear Rails



L1943.TLC43

LONG LINEAR RAILS

Material

Carbon steel. Raceways induction hardened and ground.
Electrolytic zinc-plated (excluding raceways).

Technical Notes

The T rail is a master rail and is usually

used with a U slave rail (allows for system misalignment).

This is the counterbored rail type (most popular), which is usually used with a corresponding ULC rail.
Special low profile Torx head screws provided free of charge.

Weight: 2,6 Kg/m.

Tips

Standard carriages are the L1943.N versions (die cast aluminium alloy with wipers). Alternatively the L1943.C type is also available (without wipers).

Order No.	d ₁	d ₂ for screws	h ₁	h ₂	l ₁	l ₂	l ₃	r ₁	w ₁	w ₂	w ₃
L1943.TLC43-0400	18	M8	43	21.5	400	80	40	2.5	21	4.5	3.1
L1943.TLC43-0480	18	M8	43	21.5	480	80	40	2.5	21	4.5	3.1
L1943.TLC43-0560	18	M8	43	21.5	560	80	40	2.5	21	4.5	3.1
L1943.TLC43-0640	18	M8	43	21.5	640	80	40	2.5	21	4.5	3.1
L1943.TLC43-0720	18	M8	43	21.5	720	80	40	2.5	21	4.5	3.1
L1943.TLC43-0800	18	M8	43	21.5	800	80	40	2.5	21	4.5	3.1
L1943.TLC43-0880	18	M8	43	21.5	880	80	40	2.5	21	4.5	3.1
L1943.TLC43-0960	18	M8	43	21.5	960	80	40	2.5	21	4.5	3.1
L1943.TLC43-1040	18	M8	43	21.5	1040	80	40	2.5	21	4.5	3.1
L1943.TLC43-1120	18	M8	43	21.5	1120	80	40	2.5	21	4.5	3.1
L1943.TLC43-1200	18	M8	43	21.5	1200	80	40	2.5	21	4.5	3.1
L1943.TLC43-1280	18	M8	43	21.5	1280	80	40	2.5	21	4.5	3.1
L1943.TLC43-1360	18	M8	43	21.5	1360	80	40	2.5	21	4.5	3.1
L1943.TLC43-1440	18	M8	43	21.5	1440	80	40	2.5	21	4.5	3.1
L1943.TLC43-1520	18	M8	43	21.5	1520	80	40	2.5	21	4.5	3.1
L1943.TLC43-1600	18	M8	43	21.5	1600	80	40	2.5	21	4.5	3.1
L1943.TLC43-1680	18	M8	43	21.5	1680	80	40	2.5	21	4.5	3.1
L1943.TLC43-1760	18	M8	43	21.5	1760	80	40	2.5	21	4.5	3.1
L1943.TLC43-1840	18	M8	43	21.5	1840	80	40	2.5	21	4.5	3.1
L1943.TLC43-1920	18	M8	43	21.5	1920	80	40	2.5	21	4.5	3.1
L1943.TLC43-2000	18	M8	43	21.5	2000	80	40	2.5	21	4.5	3.1
L1943.TLC43-2080	18	M8	43	21.5	2080	80	40	2.5	21	4.5	3.1
L1943.TLC43-2160	18	M8	43	21.5	2160	80	40	2.5	21	4.5	3.1
L1943.TLC43-2240	18	M8	43	21.5	2240	80	40	2.5	21	4.5	3.1
L1943.TLC43-2320	18	M8	43	21.5	2320	80	40	2.5	21	4.5	3.1
L1943.TLC43-2400	18	M8	43	21.5	2400	80	40	2.5	21	4.5	3.1
L1943.TLC43-2480	18	M8	43	21.5	2480	80	40	2.5	21	4.5	3.1
L1943.TLC43-2560	18	M8	43	21.5	2560	80	40	2.5	21	4.5	3.1
L1943.TLC43-2640	18	M8	43	21.5	2640	80	40	2.5	21	4.5	3.1
L1943.TLC43-2720	18	M8	43	21.5	2720	80	40	2.5	21	4.5	3.1
L1943.TLC43-2800	18	M8	43	21.5	2800	80	40	2.5	21	4.5	3.1



Order No.	d ₁	d ₂ for screws	h ₁	h ₂	l ₁	l ₂	l ₃	r ₁	w ₁	w ₂	w ₃
L1943.TLC43-2880	18	M8	43	21.5	2880	80	40	2.5	21	4.5	3.1
L1943.TLC43-2960	18	M8	43	21.5	2960	80	40	2.5	21	4.5	3.1
L1943.TLC43-3040	18	M8	43	21.5	3040	80	40	2.5	21	4.5	3.1
L1943.TLC43-3120	18	M8	43	21.5	3120	80	40	2.5	21	4.5	3.1
L1943.TLC43-3200	18	M8	43	21.5	3200	80	40	2.5	21	4.5	3.1
L1943.TLC43-3280	18	M8	43	21.5	3280	80	40	2.5	21	4.5	3.1
L1943.TLC43-3360	18	M8	43	21.5	3360	80	40	2.5	21	4.5	3.1
L1943.TLC43-3440	18	M8	43	21.5	3440	80	40	2.5	21	4.5	3.1
L1943.TLC43-3520	18	M8	43	21.5	3520	80	40	2.5	21	4.5	3.1
L1943.TLC43-3600	18	M8	43	21.5	3600	80	40	2.5	21	4.5	3.1
L1943.TLC43-3680	18	M8	43	21.5	3680	80	40	2.5	21	4.5	3.1
L1943.TLC43-3760	18	M8	43	21.5	3760	80	40	2.5	21	4.5	3.1
L1943.TLC43-3840	18	M8	43	21.5	3840	80	40	2.5	21	4.5	3.1
L1943.TLC43-3920	18	M8	43	21.5	3920	80	40	2.5	21	4.5	3.1
L1943.TLC43-4000	18	M8	43	21.5	4000	80	40	2.5	21	4.5	3.1
L1943.TLC43-4080	18	M8	43	21.5	4080	80	40	2.5	21	4.5	3.1