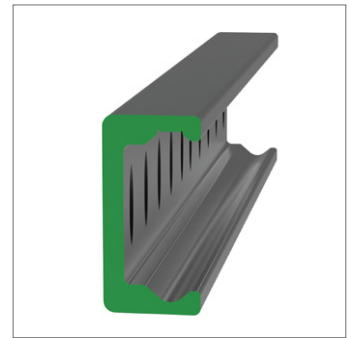
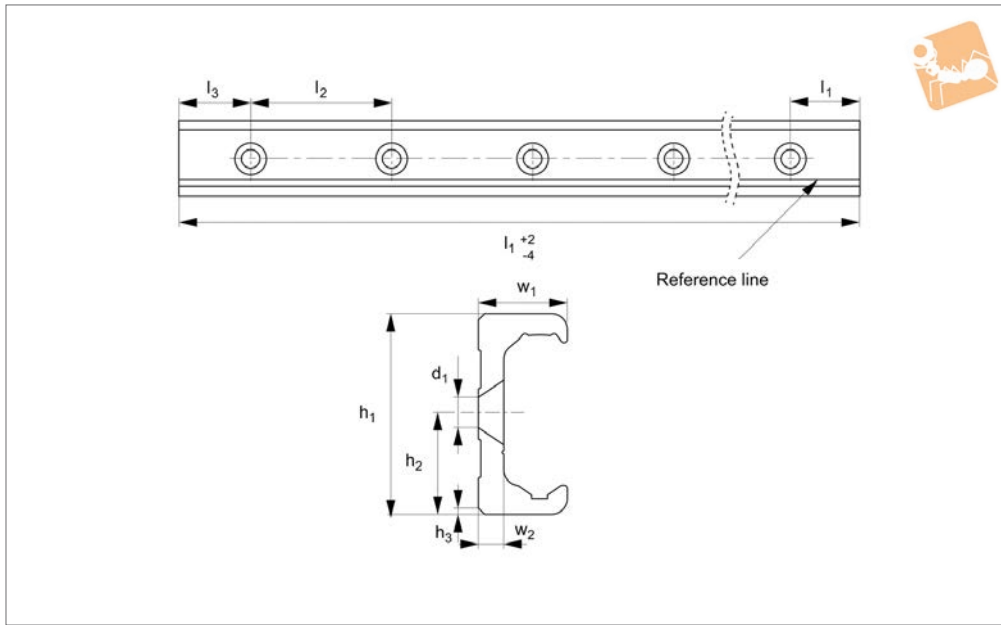


Very Heavy Duty K Rail

countersunk holes

Long Linear Rails



L1963.63K-V

LONG LINEAR RAILS

Material

Carbon steel. Raceways induction hardened and ground.
Electrolytic zinc-plated (excluding raceways).

Technical Notes

The K rail is a master rail and is usually used with a U slave rail (allows for system

misalignment in two planes).

This is the countersunk rail type which is usually used with a corresponding ULV rail. For fixing use countersunk DIN 7991 screws.

Weight: 6,0 Kg/m.

Tips

Standard carriages are the L1963.N

versions (die cast aluminium alloy with wipers). Alternatively the L1963.C type is also available (without wipers).

Important Notes

K Rails are not suited for vertical applications.

Order No.	d_1	h_1	h_2	h_3	l_1	l_2	l_3	w_1	w_2
L1963.63K-0400-V	M8	63	31.5	2x45°	400	80	40	28	8
L1963.63K-0480-V	M8	63	31.5	2x45°	480	80	40	28	8
L1963.63K-0560-V	M8	63	31.5	2x45°	560	80	40	28	8
L1963.63K-0640-V	M8	63	31.5	2x45°	640	80	40	28	8
L1963.63K-0720-V	M8	63	31.5	2x45°	720	80	40	28	8
L1963.63K-0800-V	M8	63	31.5	2x45°	800	80	40	28	8
L1963.63K-0880-V	M8	63	31.5	2x45°	880	80	40	28	8
L1963.63K-0960-V	M8	63	31.5	2x45°	960	80	40	28	8
L1963.63K-1040-V	M8	63	31.5	2x45°	1040	80	40	28	8
L1963.63K-1120-V	M8	63	31.5	2x45°	1120	80	40	28	8
L1963.63K-1200-V	M8	63	31.5	2x45°	1200	80	40	28	8
L1963.63K-1280-V	M8	63	31.5	2x45°	1280	80	40	28	8
L1963.63K-1360-V	M8	63	31.5	2x45°	1360	80	40	28	8
L1963.63K-1440-V	M8	63	31.5	2x45°	1440	80	40	28	8
L1963.63K-1520-V	M8	63	31.5	2x45°	1520	80	40	28	8
L1943.63K-1600-V	M8	63	31.5	2x45°	1600	80	40	28	8
L1963.63K-1680-V	M8	63	31.5	2x45°	1680	80	40	28	8
L1963.63K-1760-V	M8	63	31.5	2x45°	1760	80	40	28	8
L1963.63K-1840-V	M8	63	31.5	2x45°	1840	80	40	28	8
L1963.63K-1920-V	M8	63	31.5	2x45°	1920	80	40	28	8
L1963.63K-2000-V	M8	63	31.5	2x45°	2000	80	40	28	8
L1963.63K-2080-V	M8	63	31.5	2x45°	2080	80	40	28	8
L1963.63K-2160-V	M8	63	31.5	2x45°	2160	80	40	28	8
L1963.63K-2240-V	M8	63	31.5	2x45°	2240	80	40	28	8
L1963.63K-2320-V	M8	63	31.5	2x45°	2320	80	40	28	8
L1963.63K-2400-V	M8	63	31.5	2x45°	2400	80	40	28	8
L1963.63K-2480-V	M8	63	31.5	2x45°	2480	80	40	28	8
L1963.63K-2560-V	M8	63	31.5	2x45°	2560	80	40	28	8
L1963.63K-2640-V	M8	63	31.5	2x45°	2640	80	40	28	8



Order No.	d ₁	h ₁	h ₂	h ₃	l ₁	l ₂	l ₃	w ₁	w ₂
L1963.63K-2720-V	M8	63	31.5	2x45°	2720	80	40	28	8
L1963.63K-2800-V	M8	63	31.5	2x45°	2800	80	40	28	8
L1963.63K-2880-V	M8	63	31.5	2x45°	2880	80	40	28	8
L1963.63K-2960-V	M8	63	31.5	2x45°	2960	80	40	28	8
L1963.63K-3040-V	M8	63	31.5	2x45°	3040	80	40	28	8
L1963.63K-3120-V	M8	63	31.5	2x45°	3120	80	40	28	8
L1963.63K-3200-V	M8	63	31.5	2x45°	3200	80	40	28	8
L1963.63K-3280-V	M8	63	31.5	2x45°	3280	80	40	28	8
L1963.63K-3360-V	M8	63	31.5	2x45°	3360	80	40	28	8
L1963.63K-3440-V	M8	63	31.5	2x45°	3440	80	40	28	8
L1963.63K-3520-V	M8	63	31.5	2x45°	3520	80	40	28	8
L1963.63K-3600-V	M8	63	31.5	2x45°	3600	80	40	28	8
L1963.63K-3680-V	M8	63	31.5	2x45°	3680	80	40	28	8
L1963.63K-3760-V	M8	63	31.5	2x45°	3760	80	40	28	8
L1963.63K-3840-V	M8	63	31.5	2x45°	3840	80	40	28	8
L1963.63K-3920-V	M8	63	31.5	2x45°	3920	80	40	28	8
L1963.63K-4000-V	M8	63	31.5	2x45°	4000	80	40	28	8
L1963.63K-4080-V	M8	63	31.5	2x45°	4080	80	40	28	8