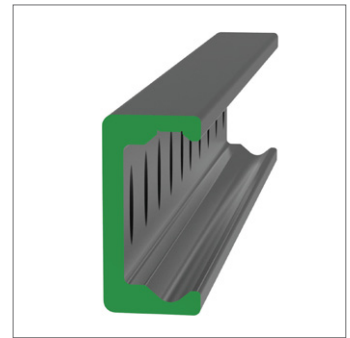
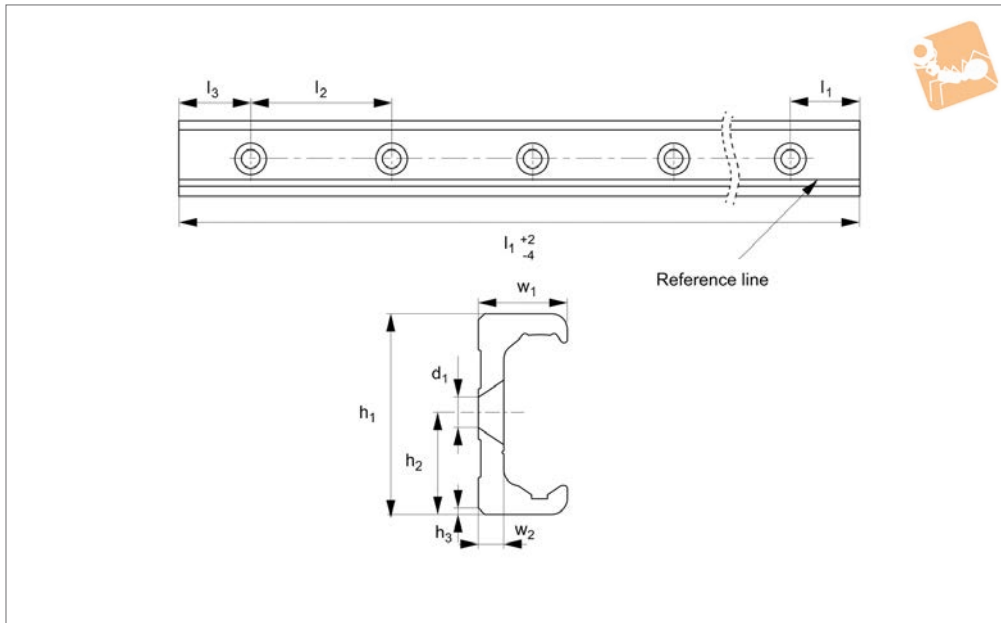


# Very Heavy Duty K Rail

countersunk holes

## Long Linear Rails



## L1963.KLV63

LONG LINEAR RAILS

### Material

Carbon steel. Raceways induction hardened and ground.  
Electrolytic zinc-plated (excluding raceways).

### Technical Notes

The K rail is a master rail and is usually used with a U slave rail (allows for system

misalignment in two planes).

This is the countersunk rail type which is usually used with a corresponding ULV rail. For fixing use countersunk DIN 7991 screws.

Weight: 6,0 Kg/m.

### Tips

Standard carriages are the L1963.N

versions (die cast aluminium alloy with wipers). Alternatively the L1963.C type is also available (without wipers).

### Important Notes

K Rails are not suited for vertical applications.

Order No.	$d_1$ for screw	$h_1$	$h_2$	$h_3$	$l_1$	$l_2$	$l_3$	$w_1$	$w_2$
L1963.KLV63-0400	M10	63	31.5	2x45°	400	80	40	28	8
L1963.KLV63-0480	M10	63	31.5	2x45°	480	80	40	28	8
L1963.KLV63-0560	M10	63	31.5	2x45°	560	80	40	28	8
L1963.KLV63-0640	M10	63	31.5	2x45°	640	80	40	28	8
L1963.KLV63-0720	M10	63	31.5	2x45°	720	80	40	28	8
L1963.KLV63-0800	M10	63	31.5	2x45°	800	80	40	28	8
L1963.KLV63-0880	M10	63	31.5	2x45°	880	80	40	28	8
L1963.KLV63-0960	M10	63	31.5	2x45°	960	80	40	28	8
L1963.KLV63-1040	M10	63	31.5	2x45°	1040	80	40	28	8
L1963.KLV63-1120	M10	63	31.5	2x45°	1120	80	40	28	8
L1963.KLV63-1200	M10	63	31.5	2x45°	1200	80	40	28	8
L1963.KLV63-1280	M10	63	31.5	2x45°	1280	80	40	28	8
L1963.KLV63-1360	M10	63	31.5	2x45°	1360	80	40	28	8
L1963.KLV63-1440	M10	63	31.5	2x45°	1440	80	40	28	8
L1963.KLV63-1520	M10	63	31.5	2x45°	1520	80	40	28	8
L1943.KLV63-1600	M10	63	31.5	2x45°	1600	80	40	28	8
L1963.KLV63-1680	M10	63	31.5	2x45°	1680	80	40	28	8
L1963.KLV63-1760	M10	63	31.5	2x45°	1760	80	40	28	8
L1963.KLV63-1840	M10	63	31.5	2x45°	1840	80	40	28	8
L1963.KLV63-1920	M10	63	31.5	2x45°	1920	80	40	28	8
L1963.KLV63-2000	M10	63	31.5	2x45°	2000	80	40	28	8
L1963.KLV63-2080	M10	63	31.5	2x45°	2080	80	40	28	8
L1963.KLV63-2160	M10	63	31.5	2x45°	2160	80	40	28	8
L1963.KLV63-2240	M10	63	31.5	2x45°	2240	80	40	28	8
L1963.KLV63-2320	M10	63	31.5	2x45°	2320	80	40	28	8
L1963.KLV63-2400	M10	63	31.5	2x45°	2400	80	40	28	8
L1963.KLV63-2480	M10	63	31.5	2x45°	2480	80	40	28	8
L1963.KLV63-2560	M10	63	31.5	2x45°	2560	80	40	28	8
L1963.KLV63-2640	M10	63	31.5	2x45°	2640	80	40	28	8



Order No.	d <sub>1</sub> for screw	h <sub>1</sub>	h <sub>2</sub>	h <sub>3</sub>	l <sub>1</sub>	l <sub>2</sub>	l <sub>3</sub>	w <sub>1</sub>	w <sub>2</sub>
L1963.KLV63-2720	M10	63	31.5	2x45°	2720	80	40	28	8
L1963.KLV63-2800	M10	63	31.5	2x45°	2800	80	40	28	8
L1963.KLV63-2880	M10	63	31.5	2x45°	2880	80	40	28	8
L1963.KLV63-2960	M10	63	31.5	2x45°	2960	80	40	28	8
L1963.KLV63-3040	M10	63	31.5	2x45°	3040	80	40	28	8
L1963.KLV63-3120	M10	63	31.5	2x45°	3120	80	40	28	8
L1963.KLV63-3200	M10	63	31.5	2x45°	3200	80	40	28	8
L1963.KLV63-3280	M10	63	31.5	2x45°	3280	80	40	28	8
L1963.KLV63-3360	M10	63	31.5	2x45°	3360	80	40	28	8
L1963.KLV63-3440	M10	63	31.5	2x45°	3440	80	40	28	8
L1963.KLV63-3520	M10	63	31.5	2x45°	3520	80	40	28	8
L1963.KLV63-3600	M10	63	31.5	2x45°	3600	80	40	28	8
L1963.KLV63-3680	M10	63	31.5	2x45°	3680	80	40	28	8
L1963.KLV63-3760	M10	63	31.5	2x45°	3760	80	40	28	8
L1963.KLV63-3840	M10	63	31.5	2x45°	3840	80	40	28	8
L1963.KLV63-3920	M10	63	31.5	2x45°	3920	80	40	28	8
L1963.KLV63-4000	M10	63	31.5	2x45°	4000	80	40	28	8
L1963.KLV63-4080	M10	63	31.5	2x45°	4080	80	40	28	8