



# Side Micrometer Stages

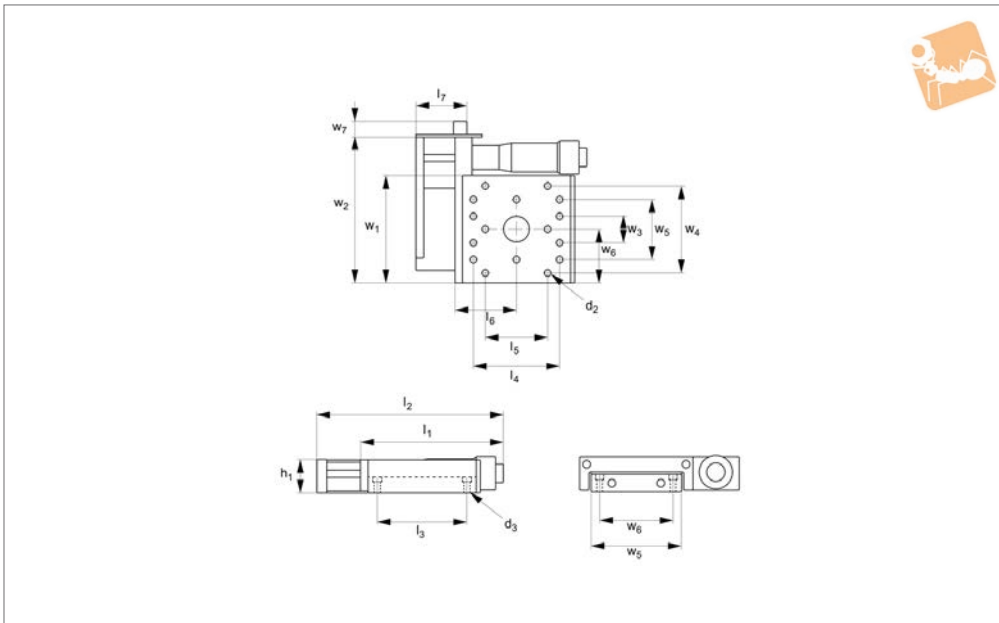
further fixing holes detail

# Manual Positioning Stages



**L3102.FH**

MANUAL POSITIONING STAGES



**Material**

Aluminium carriage and base, black anodised steel fixing, hardened steel shafts and balls and roller elements

**Technical Notes**

For main dimensions and load ratings

please see product page then refer to this information for detailed hole fixing data. These tables simply show additional mounting and fixing hole information. Dimensions  $l_7$  and  $w_7$  relate to optional posilock device.

**Important Notes**

Stroke is centred on the mid-point of the slides (ie 50% of total stroke each way). **3D CAD available.**

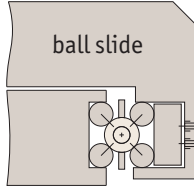
Order No.	$l_3$	$l_4$	$l_5$	$l_6$	$l_7$	$d_2$	$d_3$ for	$w_2$	$w_3$	$w_4$	$w_5$	$w_6$	$w_7$
L3102.0099-X	13.5	14.3	7.9	-	-	M2	M2	13.5	7.9	-	-	14.3	-
L3102.0101-X	25.4	25.4	17.5	15.5	15.5	M2	M2	25.4	12.7	-	23.9	17.5	5.7
L3102.0201-X	38.1	38.1	30.2	15.5	15.5	M2	M2	38.1	25.4	-	36.6	30.2	5.7
L3102.0301-X	30.1	30.1	0.0	16.0	16.0	M3	M3	0.0	30.1	-	22.2	-	6.1
L3102.0450-X	33.3	25.4	-	25.6	25.6	M4	M4	25.4	-	-	22.2	-	6.1
L3102.0451-X	33.3	25.4	0.0	25.6	25.6	M4	M4	25.4	16.7	-	22.2	-	6.1
L3102.0453-X	33.3	25.4	-	25.6	25.6	M5	M5	25.4	16.7	-	38.1	-	6.1
L3102.0750-X	50.8	?	?	26.1	26.1	M5	M5	50.8	35.9	-	38.1	-	6.1
L3102.0751-X	50.8	?	?	38.2	38.2	M5	M5	50.8	35.9	-	38.1	-	6.1
L3102.0753-X	50.8	?	?	38.2	38.2	M5	M5	50.8	35.9	-	38.1	-	6.1
L3102.0401-X	41.1	25.4	-	25.6	25.6	M4	M4	22.2	-	-	22.2	-	6.4
L3102.0501-X	69.9	56.0	28.0	25.6	25.6	M4	M4	22.2	-	-	22.2	-	6.4
L3102.0502-X	69.9	56.0	28.0	38.2	38.2	M4	M4	22.2	-	-	22.2	-	6.4
L3102.0701-X	85.9	50.8	-	26.1	26.1	M5	M5	31.8	-	-	38.1	-	6.4
L3102.0702-X	85.9	50.8	-	38.2	38.2	M5	M5	31.8	-	-	38.1	-	6.4
L3102.1201-X	66.7	54.0	31.5	44.5	44.5	M5	M5	66.7	54.0	31.5	-	-	5.9
L3102.1203-X	66.7	54.0	31.5	44.5	55.6	M5	M5	66.7	54.0	31.5	-	-	5.9
L3102.2201-X	92.1	79.4	31.5	55.6	69.9	M5	M5	92.1	79.4	31.5	-	-	5.9
L3102.2202-X	92.1	79.4	31.5	55.6	69.9	M5	M5	92.1	79.4	31.5	-	-	5.9
L3102.2203-X	92.1	79.4	31.5	55.6	69.9	M5	M5	92.1	79.4	31.5	-	-	5.9
L3102.2204-X	92.1	79.4	31.5	55.6	69.9	M5	M5	92.1	79.4	31.5	-	-	5.9
L3102.3201-X	117.5	104.8	31.5	69.9	69.9	M5	M5	117.5	104.8	31.5	-	-	5.9
L3102.3202-X	117.5	104.8	31.5	69.9	69.9	M5	M5	117.5	104.8	31.5	-	-	5.9
L3102.3203-X	117.5	104.8	31.5	69.9	69.9	M5	M5	117.5	104.8	31.5	-	-	5.9
L3102.3204-X	117.5	104.8	31.5	69.9	69.9	M5	M5	117.5	104.8	31.5	-	-	5.9



There are two different load ratings for these stages.

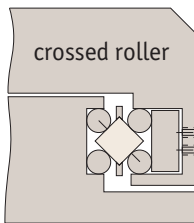
### Ball slides:

These have precision steel balls rolling in the tracks. They are the least expensive, loads up to 28Kg.



### Cross roller slides:

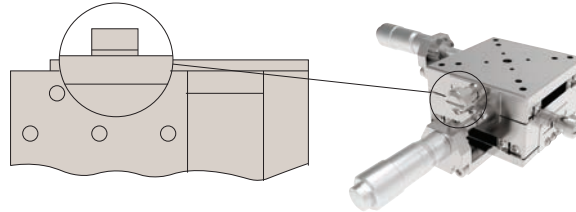
These have the same dimensions but have rollers allowing the slide to carry large loads and absorb greater moment loads up to 54Kg.



### Locking options

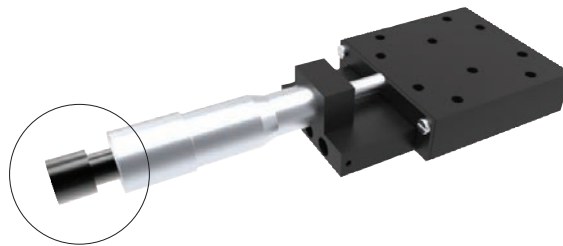
#### Posi-lock:

Allows locking of the carriage in place with a friction locking mechanism.



#### Locking micrometer:

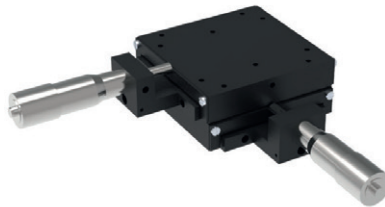
Locking of the micrometer to fix the micrometer setting.



### Front drive micrometer positioning stages



X Stage



XY Stage

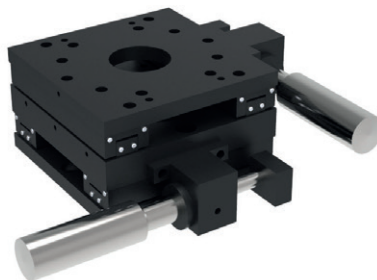


XYZ Stage

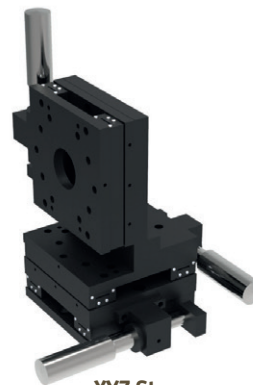
### Side drive micrometer positioning stages



X Stage



XY Stage



XYZ Stage

Also available in stainless steel.