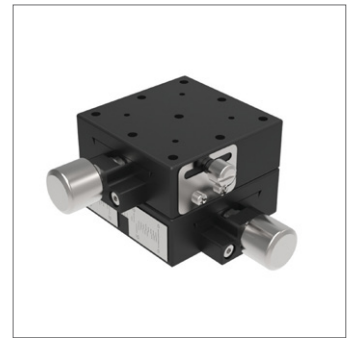
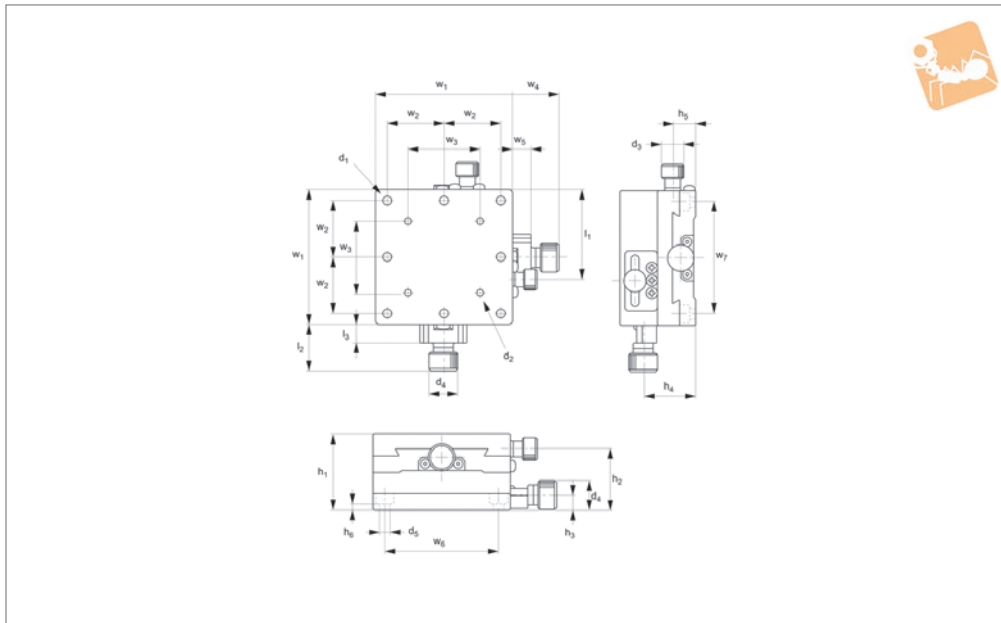




# Miniature Dovetail Stages

XY axis

# Manual Positioning Stages



**L3300.XY**

MANUAL POSITIONING STAGES

**Material**

Brass, blackened body, aluminium knob.

Minimum vernier reading 0,1mm.

Straightness accuracy 30µ.

**Technical Notes**

Travel 0,5mm for one revolution.

Order No.	$h_1$	Travel	Load kg max.	$w_1$	$d_1$	$d_2$	$d_3$	$d_4$
L3300.025-XY	30	±3	2.9	25	M2	-	6	12
L3300.040-XY	30	±7	2.8	40	M3	M2	6	12
L3300.060-XY	34	±9	3.4	60	M4	M3	10	12

Order No.	$d_5$	$h_2$	$h_3$	$h_4$	$h_5$	$h_6$	$l_1$	$l_2$	$l_3$	$w_2$	$w_3$	$w_4$	$w_5$	$w_6$	$w_7$
L3300.025-XY	2.5	26.5	7.0	22.0	11.5	4.5	15	20	8	10	-	20	8.0	8	20
L3300.040-XY	3.5	26.5	7.0	22.0	11.5	3.5	28	20	8	20	20	20	8.0	8	32
L3300.060-XY	4.5	27.5	6.5	23.5	10.5	2.5	40	20	8	25	32	20	11.5	8	50