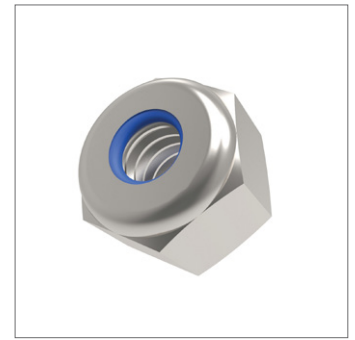
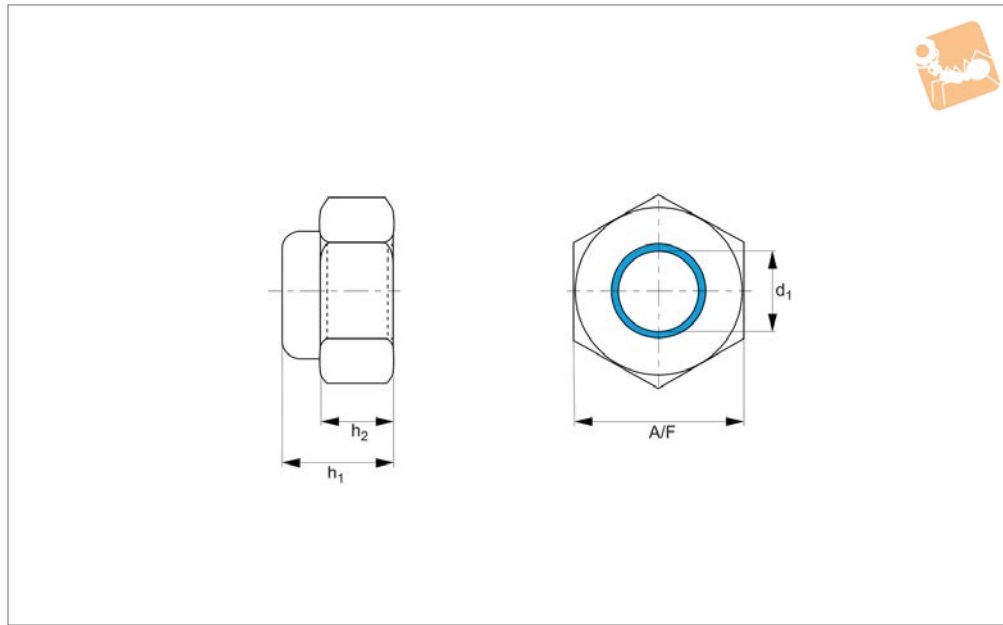




Nylon Insert Nuts

Type T - A2 stainless



P0314.A2

NUTS

Material

Stainless steel (A2).

Technical Notes

To DIN 985.

Order No.	d ₁	h ₁	h ₂	A/F	Material
P0314.025-A2	M 2,5	3.8	2.0	5	A2 s/s
P0314.030-A2	M 3	4.0	2.4	5.5	A2 s/s
P0314.040-A2	M 4	5.0	3.2	7	A2 s/s
P0314.050-A2	M 5	5.0	4.0	8	A2 s/s
P0314.060-A2	M 6	6.0	5.0	10	A2 s/s
P0314.080-A2	M 8	8.0	6.5	13	A2 s/s
P0314.080-100-A2	M 8x1,0	8.0	6.5	13	A2 s/s
P0314.100-A2	M10	10	8.0	17	A2 s/s
P0314.100-100-A2	M10x1,0	10	8.0	17	A2 s/s
P0314.120-A2	M12	12	10	19	A2 s/s
P0314.120-150-A2	M12x1,5	12	10	19	A2 s/s
P0314.140-A2	M14	14	11	22	A2 s/s
P0314.160-A2	M16	16	13	24	A2 s/s
P0314.160-150-A2	M16x1,5	16	13	24	A2 s/s
P0314.180-A2	M18	18.5	15	27	A2 s/s
P0314.200-A2	M20	20	16	30	A2 s/s
P0314.200-150-A2	M20x1,5	20	16	30	A2 s/s
P0314.220-A2	M22	22	18	32	A2 s/s
P0314.240-A2	M24	24	19	36	A2 s/s
P0314.240-150-A2	M24x1,5	24	19	36	A2 s/s
P0314.270-A2	M27	27	22	41	A2 s/s
P0314.300-A2	M30	30	24	46	A2 s/s
P0314.330-A2	M33	33	26	50	A2 s/s
P0314.360-A2	M36	36	29	55	A2 s/s