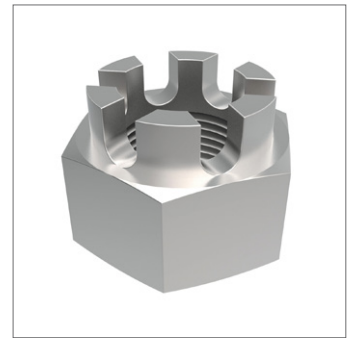
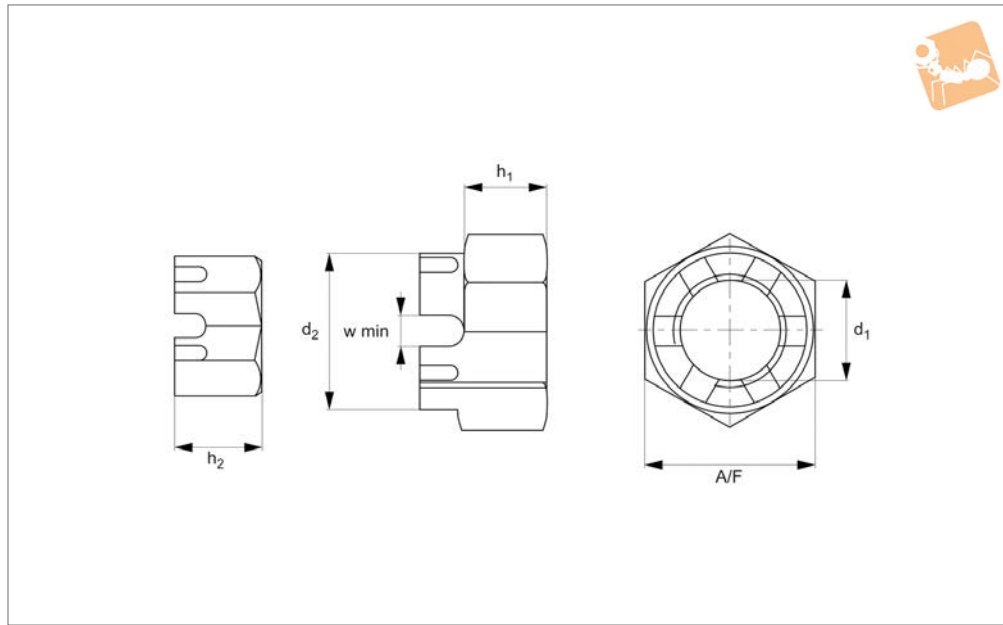




Hexagon Castle Nuts

A2 Stainless



P0320.A2

NUTS

Material

Stainless steel (A2).

Technical Notes

To DIN 935.

Order No.	d ₁	h ₁	h ₂	d ₂	w min.	A/F	Material
P0320.050-A2	M 5	4.0	6.0	-	1.4	8	A2 s/s
P0320.060-A2	M 6	5.0	7.5	-	2.0	10	A2 s/s
P0320.080-A2	M 8	6.5	9.5	-	2.5	13	A2 s/s
P0320.100-A2	M10	8.0	12.0	-	2.8	17	A2 s/s
P0320.120-A2	M12	10.0	15.0	17	3.5	19	A2 s/s
P0320.140-A2	M14	11.0	16.0	19	3.5	22	A2 s/s
P0320.160-A2	M16	13.0	19.0	22	4.5	24	A2 s/s
P0320.180-A2	M18	15.0	21.0	25	4.5	27	A2 s/s
P0320.200-A2	M20	16.0	22.0	28	4.5	30	A2 s/s
P0320.240-A2	M24	19.0	27.0	34	5.5	36	A2 s/s
P0320.270-A2	M27	22.0	30.0	38	5.5	41	A2 s/s
P0320.300-A2	M30	24.0	33.0	42	7.0	46	A2 s/s
P0320.360-A2	M36	29.0	38.0	50	7.0	55	A2 s/s