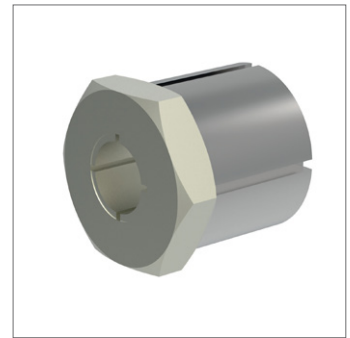
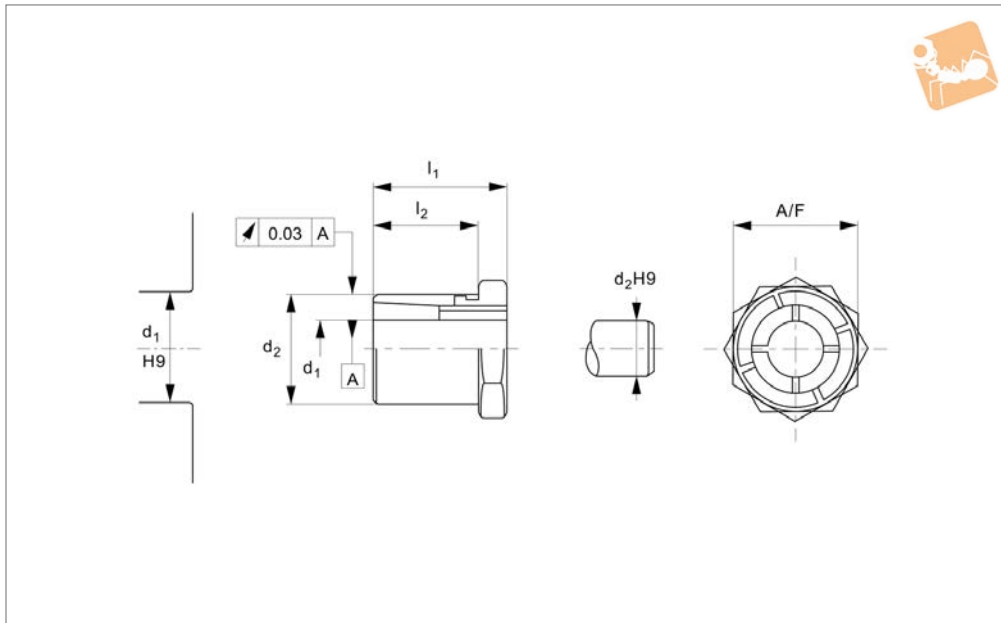




Steel Taper Bushes

no lock nut

Rigid Couplings



R3221

RIGID COUPLINGS

Material

Body, galvanized steel. Internal part and nut from nickel plated steel.

Technical Notes

Used to easily and effectively achieve shaft/hub joints. Simple axial and radial fixing.

For applications such as fixing sprockets, gears, pulleys, cams, levers on to shafts. See technical pages for installation instructions.

Parallelism is 0,03 mm.

Tips

F_a max. kN is the transferable thrust load.
 P_s max. N/mm² is the surface pressure on the shaft.

P_h max. N/mm² is the surface pressure on the bore.

Order No.	d_1 tol. H9	d_2 tol. h9	l_1	l_2	A/F	Torque to Nm	Torque Nm max.	F_a kN	P_s N/mm ² max.	P_h N/mm ² max.	Weight g
R3221.050	5	14	19	15	14	9.9	10.1	4.0	264	96	20
R3221.060	6	14	19	15	14	9.9	12.1	4.0	220	96	19
R3221.080	8	16	22	17	16	16.9	23.4	5.8	179	91	26
R3221.090	9	20	24	19	22	34.9	43.7	9.7	245	115	47
R3221.100	10	20	24	19	22	34.9	48.6	9.7	221	115	46
R3221.110	11	22	24	19	22	43.8	59.9	10.9	225	117	51
R3221.120	12	22	24	19	22	43.8	65.3	10.9	206	117	49
R3221.140	14	26	28	22	27	65.0	93.0	13.3	178	99	83
R3221.150	15	26	28	22	27	65.0	99.0	13.3	166	99	78
R3221.160	16	26	28	22	27	65.0	106.0	13.3	156	99	73
R3221.180	18	35	36	27	36	161.0	223.0	24.8	224	125	201
R3221.190	19	35	36	27	36	161.0	235.0	24.8	212	125	189
R3221.200	20	35	36	27	36	161.0	248.0	24.8	201	125	186
R3221.220	22	42	41	30	46	250.0	349.0	31.8	197	110	346
R3221.240	24	42	41	30	46	250.0	381.0	31.8	180	110	326
R3221.250	25	42	41	30	46	250.0	397.0	31.8	173	110	315
R3221.280	28	47	44	33	50	355.0	565.0	40.4	174	110	403
R3221.300	30	47	44	33	50	355.0	605.0	40.4	162	110	378
R3221.320	32	55	51	38	55	490.0	764.0	47.8	166	102	632
R3221.350	35	55	51	38	55	490.0	836.0	47.8	151	102	571
R3221.380	38	62	58	43	65	720.0	1179.0	62.1	159	111	897
R3221.400	40	62	58	43	65	720.0	1241.0	62.1	151	111	842

