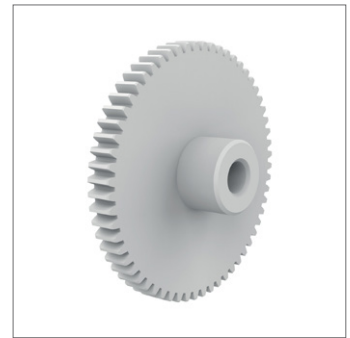
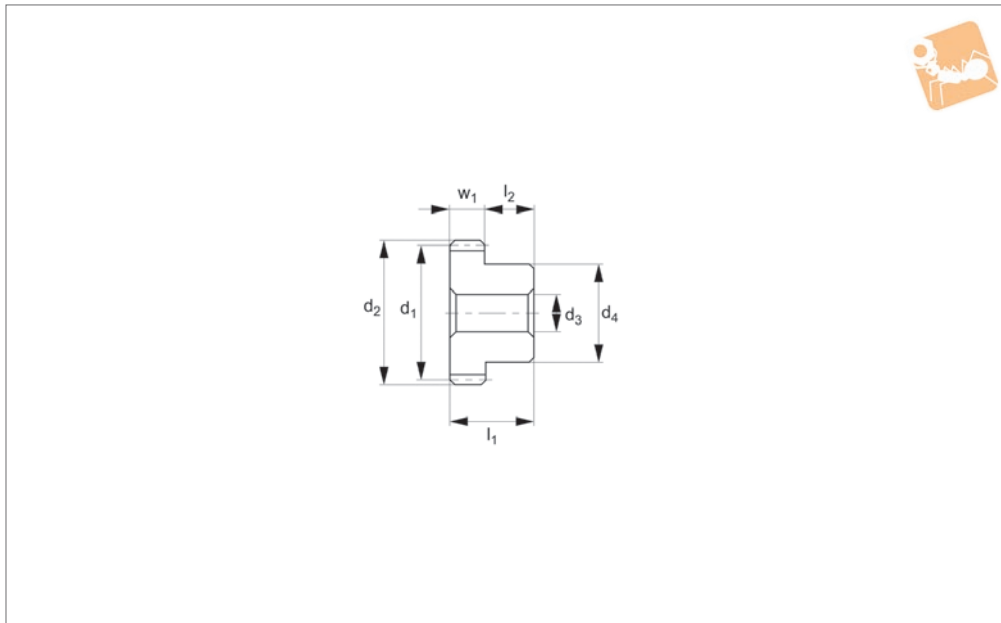




# Spur Gears - Module 0.8 - Plastic

white polyacetal - 16-120 teeth



**R5149**

STANDARD SPUR GEARS

### Material

White polyacetal (PA, also known as polyoxymethylene/POM), machined. Accuracy to JIS B 1702-1 (ISO) class 9-10.

### Technical Notes

20° pressure angle, full depth tooth.  
Amount of backlash when assembling

gears = 0,016 - 0,048mm.

### Tips

For a version of this product with 14-15 teeth, see R5148. For white polyacetal module 0.8 gears with threaded holes for set screws, see R5152.

Max. allowable torque (Nm) is based on

standard operating conditions (see technical pages) with a safety factor of 1.2. For non standard applications apply a suitable safety factor depending on frequency of use, type of working etc.

Order No.	Module	No. of teeth z	Pitch dia. d <sub>1</sub>	d <sub>2</sub>	w <sub>1</sub>	d <sub>3</sub> tol. H9	d <sub>4</sub>	l <sub>1</sub>	l <sub>2</sub>	Torque Nm max.	Weight g
R5149.080-016	m 0.8	16	12.8	14.4	5	4	10.0	14	9	0.39	1.7
R5149.080-018	m 0.8	18	14.4	16.0	5	4	10.0	14	9	0.44	1.9
R5149.080-020	m 0.8	20	16.0	17.6	5	4	10.0	14	9	0.49	2.2
R5149.080-022	m 0.8	22	17.6	19.2	5	5	12.5	14	9	0.54	2.9
R5149.080-024	m 0.8	24	19.2	20.8	5	5	12.5	14	9	0.59	3.2
R5149.080-025	m 0.8	25	20.0	21.6	5	5	12.5	14	9	0.61	3.4
R5149.080-028	m 0.8	28	22.4	24.0	5	5	12.5	14	9	0.68	4.0
R5149.080-030	m 0.8	30	24.0	25.6	5	5	12.5	14	9	0.73	4.4
R5149.080-032	m 0.8	32	25.6	27.2	5	5	12.5	14	9	0.78	4.8
R5149.080-036	m 0.8	36	28.8	30.4	5	6	14.0	14	9	0.88	6.0
R5149.080-040	m 0.8	40	32.0	33.6	5	6	14.0	14	9	0.98	7.1
R5149.080-045	m 0.8	45	36.0	37.6	5	6	14.0	14	9	1.10	8.6
R5149.080-048	m 0.8	48	38.4	40.0	5	6	14.0	14	9	1.17	9.6
R5149.080-050	m 0.8	50	40.0	41.6	5	6	14.0	14	9	1.22	10.3
R5149.080-056	m 0.8	56	44.8	46.4	5	6	14.0	14	9	1.37	12.6
R5149.080-060	m 0.8	60	48.0	49.6	5	6	14.0	14	9	1.46	14.2
R5149.080-064	m 0.8	64	51.2	52.8	5	6	14.0	14	9	1.56	15.9
R5149.080-070	m 0.8	70	56.0	57.6	5	8	16.0	14	9	1.71	19.0
R5149.080-072	m 0.8	72	57.6	59.2	5	8	16.0	14	9	1.76	20.1
R5149.080-080	m 0.8	80	64.0	65.6	5	8	16.0	14	9	1.95	24.2
R5149.080-090	m 0.8	90	72.0	73.6	5	8	20.0	14	9	2.20	31.7
R5149.080-100	m 0.8	100	80.0	81.6	5	8	24.0	14	9	2.44	40.2
R5149.080-120	m 0.8	120	96.0	97.6	5	8	30.0	14	9	2.93	59.0