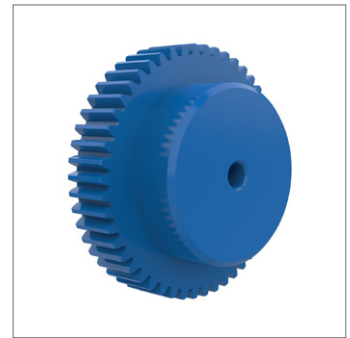
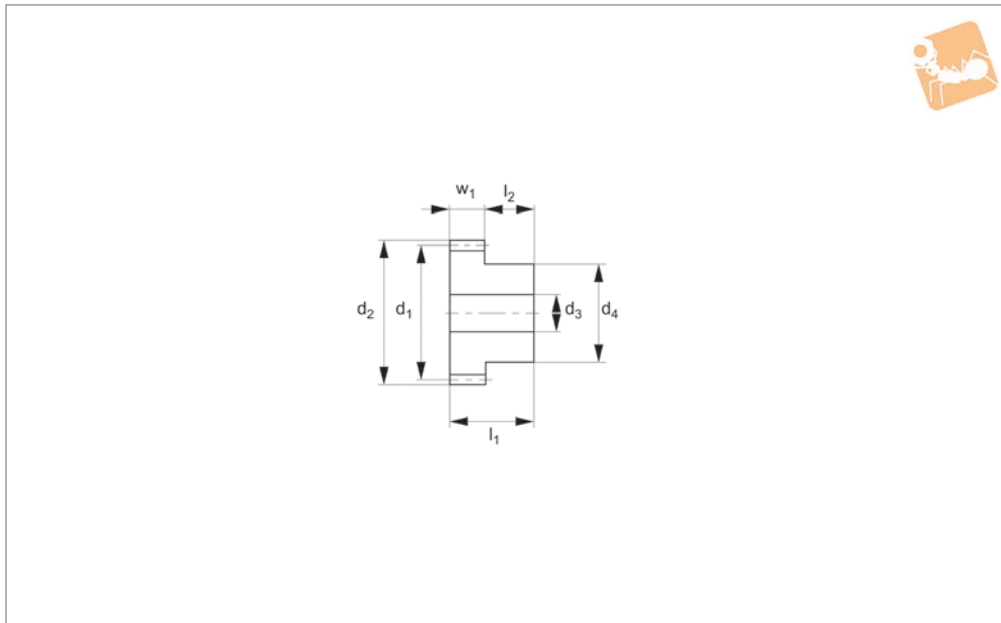




# Spur Gears - Module 1 - Plastic

blue polyacetal - 12-120 teeth



**R5172**

STANDARD SPUR GEARS

### Material

Blue polyacetal, machined.  
Accuracy to JIS B 1702-1 (ISO) class 9 - 10.

### Technical Notes

20° pressure angle, full depth tooth.  
Amount of backlash when assembling gears = 0,06 - 0,12mm.

Blue polyacetal machined gears are suitable for use in food machinery applications. Approved by the FDA (USA) and by regulators in the EU and Japan, where the food has an alcohol percentage of <15%. Please clean gears thoroughly before use.

### Tips

Max. allowable torque (Nm) is based on standard operating conditions (see technical pages) with a safety factor of 1.2. For non standard applications apply a suitable safety factor depending on frequency of use, type of working etc.

Order No.	Module	No. of teeth z	Pitch dia. d <sub>1</sub>	d <sub>2</sub>	w <sub>1</sub>	d <sub>3</sub> tol. H9	d <sub>4</sub>	l <sub>1</sub>	l <sub>2</sub>	Torque Nm max.	Weight g
R5172.100-012	m 1	12	12	14	10	4	8	20	10	0.69	1.9
R5172.100-014	m 1	14	14	16	10	4	10	20	10	0.92	2.9
R5172.100-015	m 1	15	15	17	10	4	10	20	10	1.02	3.2
R5172.100-016	m 1	16	16	18	10	4	12	20	10	1.12	4.0
R5172.100-017	m 1	17	17	19	10	4	14	20	10	1.21	5.0
R5172.100-018	m 1	18	18	20	10	4	15	20	10	1.31	5.7
R5172.100-020	m 1	20	20	22	10	5	16	20	10	1.54	6.6
R5172.100-022	m 1	22	22	24	10	5	18	20	10	1.61	8.3
R5172.100-023	m 1	23	23	25	10	5	20	20	10	1.71	9.7
R5172.100-024	m 1	24	24	26	10	5	20	20	10	1.84	10.2
R5172.100-025	m 1	25	25	27	10	5	22	20	10	1.92	11.6
R5172.100-026	m 1	26	26	28	10	5	22	20	10	1.99	12.2
R5172.100-028	m 1	28	28	30	10	5	24	20	10	2.15	14.4
R5172.100-030	m 1	30	30	32	10	5	24	20	10	2.30	15.7
R5172.100-032	m 1	32	32	34	10	5	24	20	10	2.46	17.1
R5172.100-034	m 1	34	34	36	10	5	24	20	10	2.67	18.5
R5172.100-035	m 1	35	35	37	10	5	24	20	10	2.59	19.3
R5172.100-036	m 1	36	36	38	10	5	26	20	10	2.76	21.2
R5172.100-038	m 1	38	38	40	10	5	28	20	10	2.94	24.0
R5172.100-040	m 1	40	40	42	10	5	30	20	10	3.07	27.0
R5172.100-042	m 1	42	42	44	10	5	30	20	10	3.21	28.8
R5172.100-044	m 1	44	44	46	10	5	32	20	10	3.39	32.1
R5172.100-045	m 1	45	45	47	10	5	32	20	10	3.45	33.1
R5172.100-048	m 1	48	48	50	10	5	36	20	10	3.68	39.2
R5172.100-050	m 1	50	50	52	10	5	36	20	10	3.84	41.4
R5172.100-052	m 1	52	52	54	10	5	40	20	10	4.03	47.0
R5172.100-055	m 1	55	55	57	10	5	40	20	10	4.23	50.5
R5172.100-056	m 1	56	56	58	10	5	40	20	10	4.29	51.7
R5172.100-060	m 1	60	60	62	10	5	46	20	10	4.60	62.6



Order No.	Module	No. of teeth z	Pitch dia. d <sub>1</sub>	d <sub>2</sub>	w <sub>1</sub>	d <sub>3</sub> tol. H9	d <sub>4</sub>	l <sub>1</sub>	l <sub>2</sub>	Torque Nm max.	Weight g
R5172.100-064	m 1	64	64	66	10	5	48	20	10	4.91	70.2
R5172.100-065	m 1	65	65	67	10	5	48	20	10	4.97	71.6
R5172.100-070	m 1	70	70	72	10	5	52	20	10	5.37	83.5
R5172.100-072	m 1	72	72	74	10	5	52	20	10	5.52	86.6
R5172.100-075	m 1	75	75	77	10	5	52	20	10	5.81	91.5
R5172.100-080	m 1	80	80	82	10	5	58	20	10	6.13	107.4
R5172.100-085	m 1	85	85	87	10	5	62	20	10	6.44	121.8
R5172.100-090	m 1	90	90	92	10	5	65	20	10	6.89	135.7
R5172.100-100	m 1	100	100	102	10	5	70	20	10	7.66	164.0
R5172.100-120	m 1	120	120	122	10	5	84	20	10	9.18	236.8