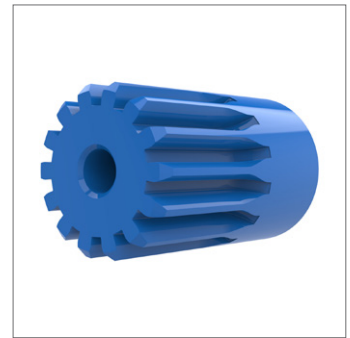
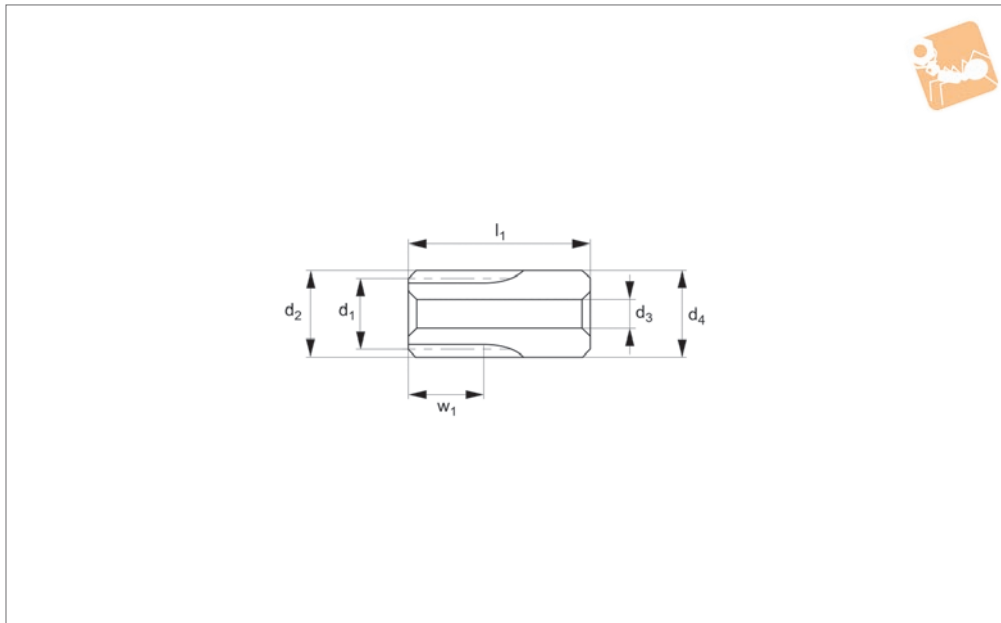




# Spur Gears - Module 1.5 - Plastic

blue polyacetal - 14 teeth



**R5191**

STANDARD SPUR GEARS

**Material**

Polyacetal, blue, machined.  
Accuracy to JIS B 1702-1 (ISO) class 9-10.

**Technical Notes**

20° pressure angle, full depth tooth.  
Amount of backlash when assembling gears = 0,09-0,18mm.  
Blue polyacetal machined gears are

suitable for use in food machinery applications. Approved by the FDA (USA) and by regulators in the EU and Japan, where the food has an alcohol percentage of <15%. Please clean gears thoroughly before use.

**Tips**

For module 1.5 blue plastic gears with 15-60 teeth see R5193.

Max. allowable torque (Nm) is based on standard operating conditions (see technical pages) with a safety factor of 1.2. For non standard applications apply a suitable safety factor depending on frequency of use, type of working etc.

Order No.	Module	No. of teeth z	Pitch dia. d <sub>1</sub>	d <sub>2</sub>	w <sub>1</sub>	d <sub>3</sub> tol. H9	d <sub>4</sub>	l <sub>1</sub>	Torque Nm max.	Weight g
R5191.150-014	m 1.5	14	21	24	18	6	24	40	1.36	21