

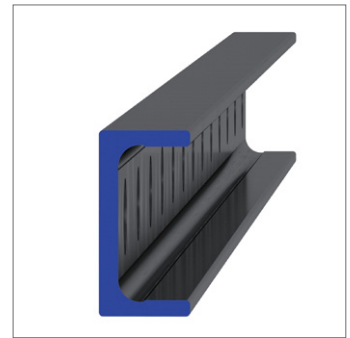
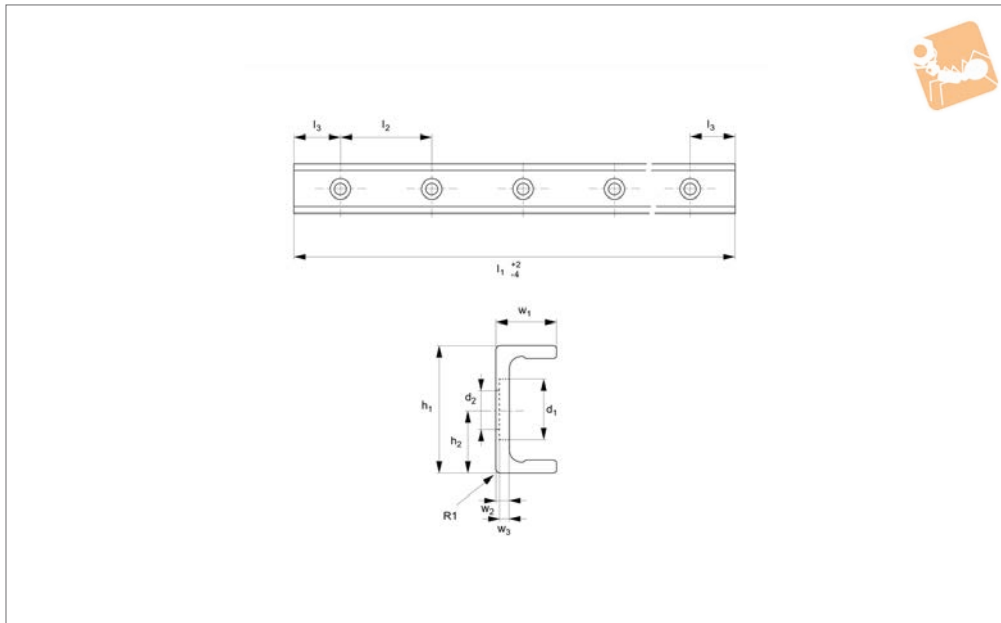


# Medium Duty U Rail

counterbored holes



## Long Linear Rails



## L1928.ULC28

LONG LINEAR RAILS

### Material

Carbon steel. Raceways induction hardened and ground.  
Electrolytic zinc-plated (excluding raceways).

### Technical Notes

The U rail is a slave rail and is usually used

with a T master rail.

This is the ULC counterbored rail type (most popular), which is usually used with a corresponding TLC rail. Special low profile Torx head screws provided free of charge.  
Weight: 1,0 Kg/m.

### Tips

Standard carriages are the L1928.N versions (die cast aluminium alloy with wipers). Alternatively the L1928.C type is also available (without wipers).

Order No.	d <sub>1</sub>	d <sub>2</sub>	h <sub>1</sub>	h <sub>2</sub>	l <sub>1</sub>	l <sub>2</sub>	l <sub>3</sub>	r <sub>1</sub>	w <sub>1</sub>	w <sub>2</sub>	w <sub>3</sub>
L1928.ULC28-0240	11	M5	28	14	240	80	40	1	12	3	2
L1928.ULC28-0320	11	M5	28	14	320	80	40	1	12	3	2
L1928.ULC28-0400	11	M5	28	14	400	80	40	1	12	3	2
L1928.ULC28-0480	11	M5	28	14	480	80	40	1	12	3	2
L1928.ULC28-0560	11	M5	28	14	560	80	40	1	12	3	2
L1928.ULC28-0640	11	M5	28	14	640	80	40	1	12	3	2
L1928.ULC28-0720	11	M5	28	14	720	80	40	1	12	3	2
L1928.ULC28-0800	11	M5	28	14	800	80	40	1	12	3	2
L1928.ULC28-0880	11	M5	28	14	880	80	40	1	12	3	2
L1928.ULC28-0960	11	M5	28	14	960	80	40	1	12	3	2
L1928.ULC28-1040	11	M5	28	14	1040	80	40	1	12	3	2
L1928.ULC28-1120	11	M5	28	14	1120	80	40	1	12	3	2
L1928.ULC28-1200	11	M5	28	14	1200	80	40	1	12	3	2
L1928.ULC28-1280	11	M5	28	14	1280	80	40	1	12	3	2
L1928.ULC28-1360	11	M5	28	14	1360	80	40	1	12	3	2
L1928.ULC28-1440	11	M5	28	14	1440	80	40	1	12	3	2
L1928.ULC28-1520	11	M5	28	14	1520	80	40	1	12	3	2
L1928.ULC28-1600	11	M5	28	14	1600	80	40	1	12	3	2
L1928.ULC28-1680	11	M5	28	14	1680	80	40	1	12	3	2
L1928.ULC28-1760	11	M5	28	14	1760	80	40	1	12	3	2
L1928.ULC28-1840	11	M5	28	14	1840	80	40	1	12	3	2
L1928.ULC28-1920	11	M5	28	14	1920	80	40	1	12	3	2
L1928.ULC28-2000	11	M5	28	14	2000	80	40	1	12	3	2
L1928.ULC28-2080	11	M5	28	14	2080	80	40	1	12	3	2
L1928.ULC28-2160	11	M5	28	14	2160	80	40	1	12	3	2
L1928.ULC28-2240	11	M5	28	14	2240	80	40	1	12	3	2
L1928.ULC28-2320	11	M5	28	14	2320	80	40	1	12	3	2
L1928.ULC28-2400	11	M5	28	14	2400	80	40	1	12	3	2
L1928.ULC28-2480	11	M5	28	14	2480	80	40	1	12	3	2
L1928.ULC28-2560	11	M5	28	14	2560	80	40	1	12	3	2
L1928.ULC28-2640	11	M5	28	14	2640	80	40	1	12	3	2



Order No.	d <sub>1</sub>	d <sub>2</sub>	h <sub>1</sub>	h <sub>2</sub>	l <sub>1</sub>	l <sub>2</sub>	l <sub>3</sub>	r <sub>1</sub>	w <sub>1</sub>	w <sub>2</sub>	w <sub>3</sub>
<b>L1928.ULC28-2720</b>	11	M5	28	14	2720	80	40	1	12	3	2
<b>L1928.ULC28-2800</b>	11	M5	28	14	2800	80	40	1	12	3	2
<b>L1928.ULC28-2880</b>	11	M5	28	14	2880	80	40	1	12	3	2
<b>L1928.ULC28-2960</b>	11	M5	28	14	2960	80	40	1	12	3	2
<b>L1928.ULC28-3040</b>	11	M5	28	14	3040	80	40	1	12	3	2
<b>L1928.ULC28-3120</b>	11	M5	28	14	3120	80	40	1	12	3	2
<b>L1928.ULC28-3200</b>	11	M5	28	14	3200	80	40	1	12	3	2