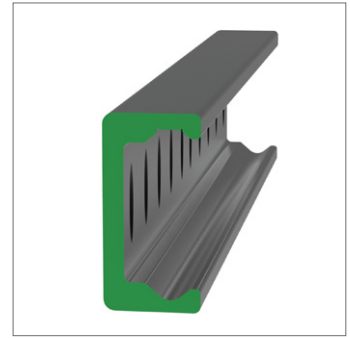
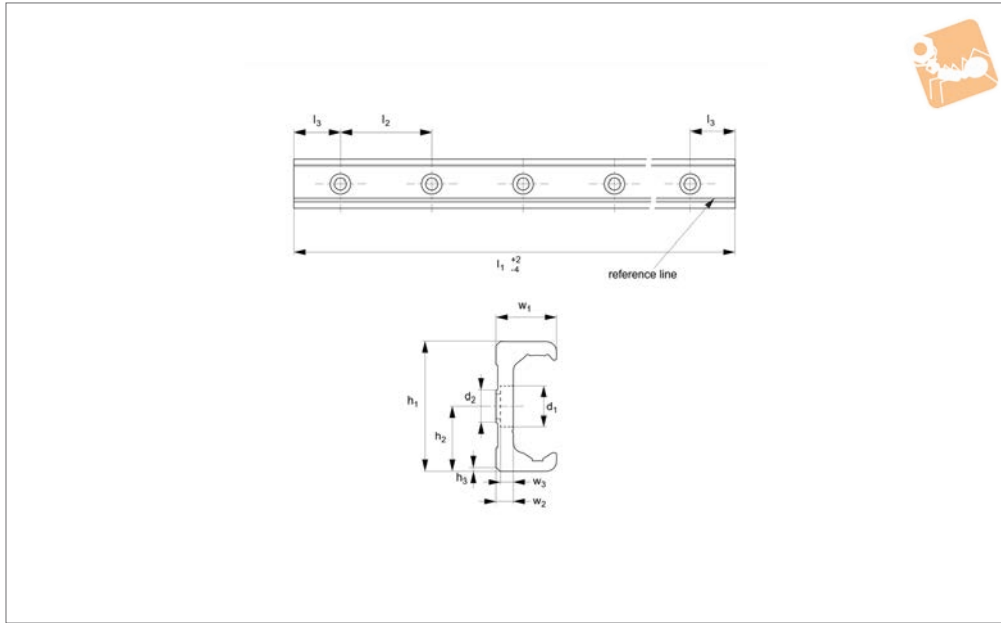


Very Heavy Duty K Rail

counterbored holes

Long Linear Rails



L1963.63K-C

LONG LINEAR RAILS

Material

Carbon steel. Raceways induction hardened and ground.
Electrolytic zinc-plated (excluding raceways).

Technical Notes

The K rail is a master rail and is usually used with a U slave rail (allows for system misalignment in two planes).

This is the counterbored rail type (most popular), which is usually used with a corresponding ULC rail.
Special low profile Torx head screws provided free of charge.
Weight: 6,0 Kg/m.

Tips

Standard carriages are the L1963.N versions (die cast aluminium alloy with

wipers). Alternatively the L1963.C type is also available (without wipers).

Important Notes

K Rails are not suited for vertical applications.

Order No.	d ₁	d ₂ for screws	h ₁	h ₂	h ₃	l ₁	l ₂	l ₃	w ₁	w ₂	w ₃
L1963.63K-0400-C	15	M8	63	31.5	2x45°	400	80	40	28	8	5.2
L1963.63K-0480-C	15	M8	63	31.5	2x45°	480	80	40	28	8	5.2
L1963.63K-0560-C	15	M8	63	31.5	2x45°	560	80	40	28	8	5.2
L1963.63K-0640-C	15	M8	63	31.5	2x45°	640	80	40	28	8	5.2
L1963.63K-0720-C	15	M8	63	31.5	2x45°	720	80	40	28	8	5.2
L1963.63K-0800-C	15	M8	63	31.5	2x45°	800	80	40	28	8	5.2
L1963.63K-0880-C	15	M8	63	31.5	2x45°	880	80	40	28	8	5.2
L1963.63K-0960-C	15	M8	63	31.5	2x45°	960	80	40	28	8	5.2
L1963.63K-1040-C	15	M8	63	31.5	2x45°	1040	80	40	28	8	5.2
L1963.63K-1120-C	15	M8	63	31.5	2x45°	1120	80	40	28	8	5.2
L1963.63K-1200-C	15	M8	63	31.5	2x45°	1200	80	40	28	8	5.2
L1963.63K-1280-C	15	M8	63	31.5	2x45°	1280	80	40	28	8	5.2
L1963.63K-1360-C	15	M8	63	31.5	2x45°	1360	80	40	28	8	5.2
L1963.63K-1440-C	15	M8	63	31.5	2x45°	1440	80	40	28	8	5.2
L1963.63K-1520-C	15	M8	63	31.5	2x45°	1520	80	40	28	8	5.2
L1963.63K-1600-C	15	M8	63	31.5	2x45°	1600	80	40	28	8	5.2
L1963.63K-1680-C	15	M8	63	31.5	2x45°	1680	80	40	28	8	5.2
L1963.63K-1760-C	15	M8	63	31.5	2x45°	1760	80	40	28	8	5.2
L1963.63K-1840-C	15	M8	63	31.5	2x45°	1840	80	40	28	8	5.2
L1963.63K-1920-C	15	M8	63	31.5	2x45°	1920	80	40	28	8	5.2
L1963.63K-2000-C	15	M8	63	31.5	2x45°	2000	80	40	28	8	5.2
L1963.63K-2080-C	15	M8	63	31.5	2x45°	2080	80	40	28	8	5.2
L1963.63K-2160-C	15	M8	63	31.5	2x45°	2160	80	40	28	8	5.2
L1963.63K-2240-C	15	M8	63	31.5	2x45°	2240	80	40	28	8	5.2
L1963.63K-2320-C	15	M8	63	31.5	2x45°	2320	80	40	28	8	5.2
L1963.63K-2400-C	15	M8	63	31.5	2x45°	2400	80	40	28	8	5.2
L1963.63K-2480-C	15	M8	63	31.5	2x45°	2480	80	40	28	8	5.2
L1963.63K-2560-C	15	M8	63	31.5	2x45°	2560	80	40	28	8	5.2



Order No.	d ₁	d ₂ for screws	h ₁	h ₂	h ₃	l ₁	l ₂	l ₃	w ₁	w ₂	w ₃
L1963.63K-2640-C	15	M8	63	31.5	2x45°	2640	80	40	28	8	5.2
L1963.63K-2720-C	15	M8	63	31.5	2x45°	2720	80	40	28	8	5.2
L1963.63K-2800-C	15	M8	63	31.5	2x45°	2800	80	40	28	8	5.2
L1963.63K-2880-C	15	M8	63	31.5	2x45°	2880	80	40	28	8	5.2
L1963.63K-2960-C	15	M8	63	31.5	2x45°	2960	80	40	28	8	5.2
L1963.63K-3040-C	15	M8	63	31.5	2x45°	3040	80	40	28	8	5.2
L1963.63K-3120-C	15	M8	63	31.5	2x45°	3120	80	40	28	8	5.2
L1963.63K-3200-C	15	M8	63	31.5	2x45°	3200	80	40	28	8	5.2
L1963.63K-3280-C	15	M8	63	31.5	2x45°	3280	80	40	28	8	5.2
L1963.63K-3360-C	15	M8	63	31.5	2x45°	3360	80	40	28	8	5.2
L1963.63K-3440-C	15	M8	63	31.5	2x45°	3440	80	40	28	8	5.2
L1963.63K-3520-C	15	M8	63	31.5	2x45°	3520	80	40	28	8	5.2
L1963.63K-3600-C	15	M8	63	31.5	2x45°	3600	80	40	28	8	5.2
L1963.63K-3680-C	15	M8	63	31.5	2x45°	3680	80	40	28	8	5.2
L1963.63K-3760-C	15	M8	63	31.5	2x45°	3760	80	40	28	8	5.2
L1963.63K-3840-C	15	M8	63	31.5	2x45°	3840	80	40	28	8	5.2
L1963.63K-3920-C	15	M8	63	31.5	2x45°	3920	80	40	28	8	5.2
L1963.63K-4000-C	15	M8	63	31.5	2x45°	4000	80	40	28	8	5.2
L1963.63K-4080-C	15	M8	63	31.5	2x45°	4080	80	40	28	8	5.2