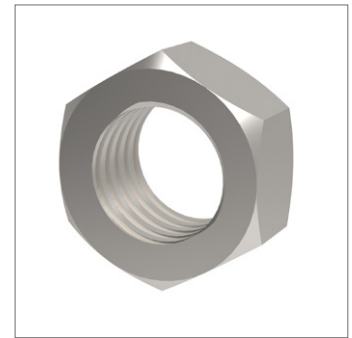
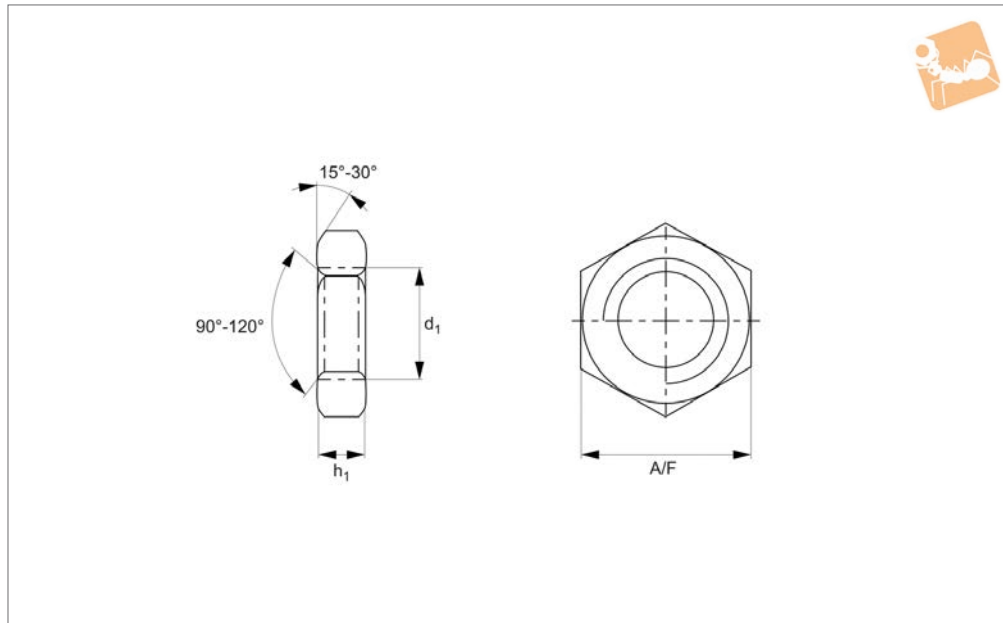


Lock Nuts Fine Thread

303 series stainless



P0306.A2

NUTS

Material

Stainless steel (AISI 303, 1.4305).

Technical Notes

To DIN 439. Fine pitch threads.
For coarse thread lock nuts see P0305.

Order No.	d ₁	h ₁ min.	A/F	Material
P0306.080-100-A2	M 8x1,0	3.7	13	A2 s/s
P0306.100-100-A2	M10x1,0	4.7	17	A2 s/s
P0306.100-125-A2	M10x1,25	4.7	17	A2 s/s
P0306.120-125-A2	M12x1,25	5.7	19	A2 s/s
P0306.120-150-A2	M12x1,5	5.7	19	A2 s/s
P0306.140-150-A2	M14x1,5	6.42	22	A2 s/s
P0306.160-150-A2	M16x1,5	7.42	24	A2 s/s
P0306.180-150-A2	M18x1,5	8.42	27	A2 s/s
P0306.200-150-A2	M20x1,5	9.1	30	A2 s/s
P0306.220-150-A2	M22x1,5	9.9	34	A2 s/s
P0306.240-150-A2	M24x1,5	10.9	36	A2 s/s
P0306.240-200-A2	M24x2,0	10.9	36	A2 s/s
P0306.270-150-A2	M27x1,5	12.4	41	A2 s/s
P0306.270-200-A2	M27x2,0	12.4	41	A2 s/s
P0306.300-150-A2	M30x1,5	13.9	46	A2 s/s
P0306.300-200-A2	M30x2,0	13.9	46	A2 s/s
P0306.330-200-A2	M33x2,0	15.4	49	A2 s/s
P0306.360-150-A2	M36x1,5	16.9	55	A2 s/s