

P2043

ANTI-VIBRATION COMPONENTS

Material

Rubber on silver zinc plated steel (rubber hardness - 55 Shore A).

Technical Notes

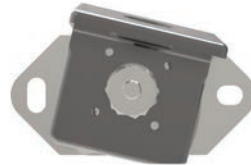
Used where transverse loads are present.

Order No.	Type	d ₁	l ₁	h ₁	l ₂	l ₃	l ₄	w ₁	w ₂	Compression max.	Static load kgf max.
P2043.100	Type 1	13	100	20	-	-	-	130	-	2	850
P2043.550	Type 2	13	150	23	215	185	15	145	60	2	1300
P2043.600	Type 2	13	200	23	265	235	15	145	60	2	1700



Recommendations for machine mounts

Machine mounts should be installed between two parallel and perfectly flat surfaces. Mounts operating tilted or twisted do not work properly. This may be due to incorrect alignment, tolerances in the building of the structure or over-tightened torque during the installation of the anti-vibration mounts.



incorrect ✘



correct ✔



incorrect ✘



correct ✔



incorrect ✘



correct ✔



incorrect ✘



correct ✔



incorrect ✘



correct ✔