

L1333



Material

Nylon PA 6,6.

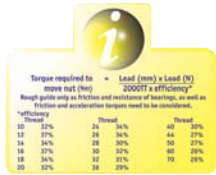
Technical Notes

For manual or powered control and medium/high speeds under moderate loads.
Low sound levels.

Can be used without lubrication but this reduces service life.

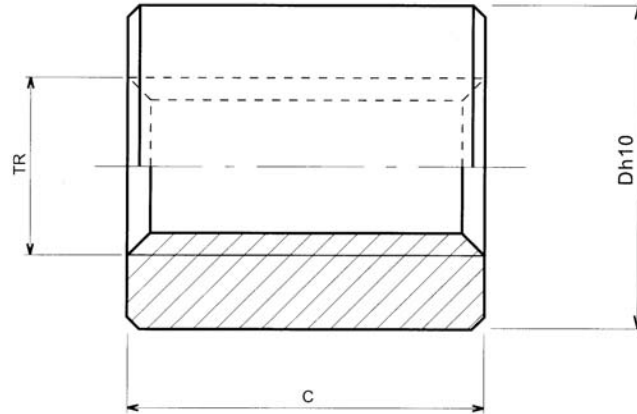
Tips

For left hand threaded nuts change R to L in the order no, eg. L1333.L10x2.



Cylindrical nylon nuts

for commercial lead screws



Order No.	Thread x Lead	Starts	D	C	Contact surface mm	Kg
L1333.R12x3	12x3	1	26	24	280	0,012
L1333.R16x4	16x4	1	36	32	490	0,032
L1333.R20x4	x420	1	45	40	790	0,060
L1333.R24x5	24x5	1	50	48	1130	0,088
L1333.R30x6	30x6	1	60	60	1780	0,150
L1333.R36x6	36x6	1	75	72	2610	0,300
L1333.R40x7	40x7	1	80	80	3210	0,370
L1333.R12x6	12x6	2	26	24	280	0,012
L1333.R16x8	16x8	2	36	32	490	0,032
L1333.R20x8	20x8	2	45	40	790	0,060
L1333.R24x10	24x10	2	50	48	1130	0,088
L1333.R30x12	30x12	2	60	60	1780	0,150
L1333.R36x12	36x12	2	75	72	2610	0,300
L1333.R40x14	40x14	2	80	80	3210	0,370

Automation
linear and rotary motion components