



L1338



Material

Steel 11SMnPb37.
Tolerance 7H.

Technical Notes

Used for low rotation speeds, manual control, for clamping or locking functions and for receiving dead weights.

Tips

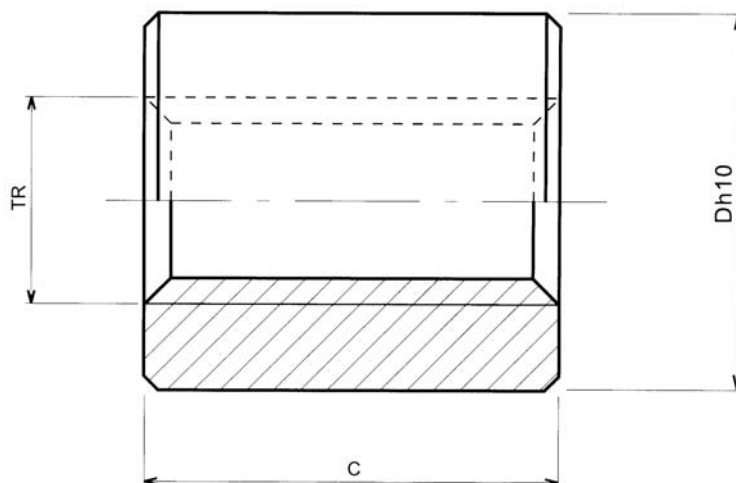
The use of steel/steel contact surface is not suitable for motorised motion.

For left hand threaded nuts change R to L in the order no, eg. L1338.L10x2.

Efficiency	Lead	Torque	Lead	Torque
10	2%	10	4%	20
12	3%	15	6%	30
14	4%	20	8%	40
16	5%	25	10%	50
18	6%	30	12%	60
20	7%	35	14%	70

Long, cylindrical steel nuts

for commercial lead screws



Order No.	For threads	Starts	D	C	Contact surface mm ²	Kg
L1338.R10x2	10x2	1	22	20	200	0,047
L1338.R12x3	12x3	1	26	24	279	0,073
L1338.R14x3	14x3	1	30	28	379	0,120
L1338.R16x4	16x4	1	36	32	485	0,206
L1338.R18x4	18x4	1	40	36	625	0,286
L1338.R20x4	20x4	1	45	40	785	0,406
L1338.R22x5	22x5	1	45	44	931	0,428
L1338.R24x5	24x5	1	50	48	1124	0,585
L1338.R26x5	26x5	1	50	52	1337	0,599
L1338.R28x5	28x5	1	60	56	1563	0,984
L1338.R30x6	30x6	1	60	60	1776	1,017
L1338.R32x6	32x6	1	60	64	1902	1,051
L1338.R36x6	36x6	1	75	72	2594	1,955
L1338.R40x7	40x7	1	80	80	3192	2,434
L1338.R44x7	44x7	1	80	88	3910	2,514
L1338.R14x6	14x6	2	30	28	379	0,120
L1338.R16x8	16x8	2	36	32	485	0,206
L1338.R18x8	18x8	2	40	36	625	0,286
L1338.R20x8	20x8	2	45	40	785	0,406
L1338.R22x10	22x10	2	45	44	931	0,428
L1338.R24x10	24x10	2	50	48	1124	0,585
L1338.R28x10	28x10	2	60	56	1563	0,984
L1338.R30x12	30x12	2	60	60	1776	1,017
L1338.R32x12	32x12	2	60	64	1902	1,051
L1338.R36x12	36x12	2	75	72	2594	1,955
L1338.R40x14	40x14	2	80	80	3192	2,434

Automation
linear and rotary motion components